

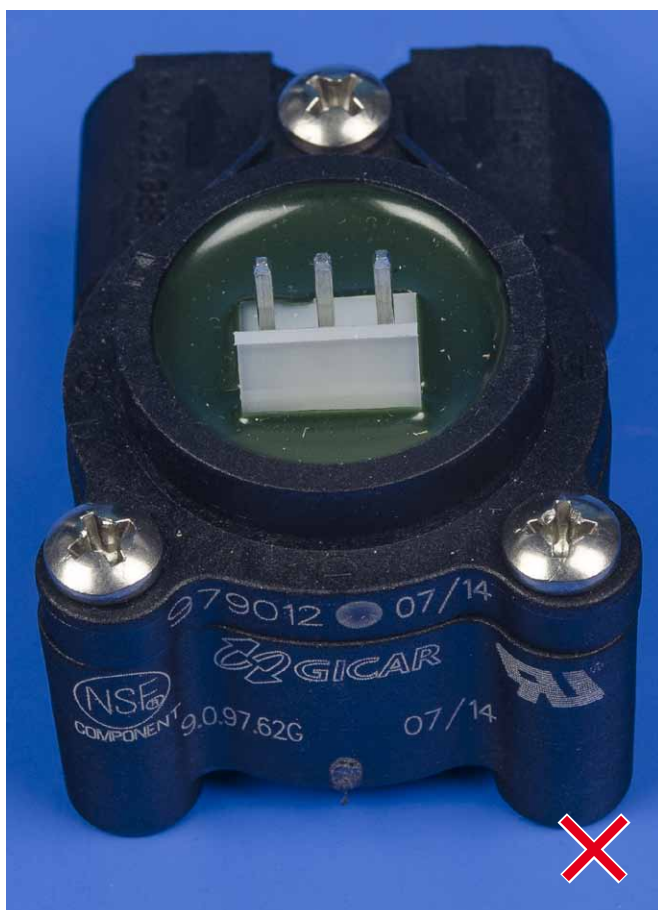
T.I. no.: 2015 - 09 Updated: -	Topic: Flowmeter spare parts kit
---	---

Date: 27.04.15	Priority	Need for action
Affected machines: SCP	High	As soon as possible
From serial number: 1513...	Medium	On next visit to the machine
As of date: CW 13	X Low	X FYI only

OVERVIEW

The flow meter 33.2263.8000 has been optimised by the supplier. To ensure that the new flow meter 33.2263.8100 (with a different shape) is held correctly in the machine, it needs a "Flow meter holder" for installation.

NOTE
The flow meter spare parts set can be ordered from SAG sales under article number 074355.

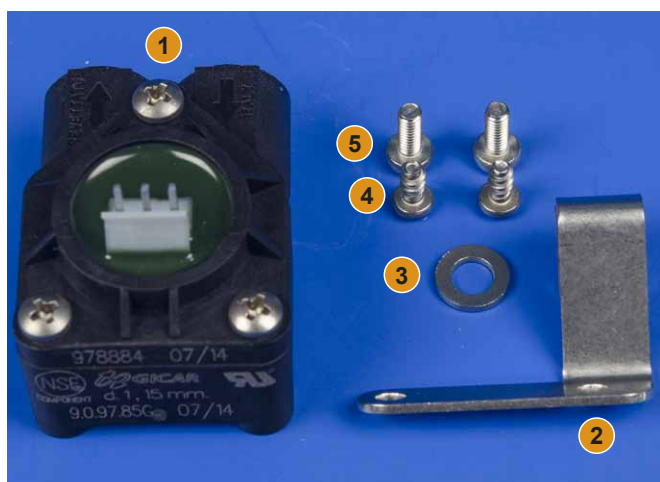


Flow meter 33.2263.8000



Flow meter 074355

FLOW METER SPARE PARTS SET 074355



Flow meter spare parts set 074355

The spare parts set contains the following parts:

1. 1x flow meter (33.2263.8100)
2. 1x flow meter holder (074354)
3. 1x M6 stainless washer or chamfer (1060014)
4. 2x fillister cross head screws PT4x8 stainless (1685005)
5. 2x fillister cross head screws M4x10 stainless (00.0047.3363)

INSTALLATION INSTRUCTIONS



Fixed water connection screws



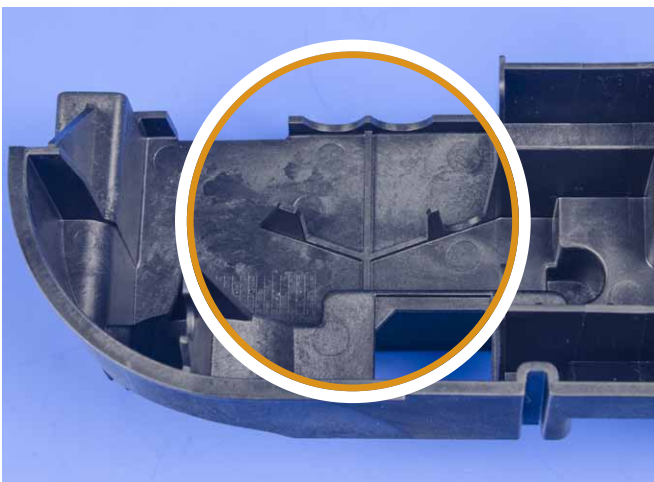
Remove the old flow meter with removed screw-in connectors and o-rings

- ▶ When the machine is in operation, first start the cooling down routine in the "Service engineer - Settings - Service routines - Cooldown" menu to depressurise the machine. If the machine is not heated, continue straight from the next point.
- ▶ Disconnect the machine from the mains and water supply.
- ▶ Open the front doors.
- ▶ Remove the rear casing.
- ▶ Remove the reinforced hose.
- ▶ Remove the cover on the circuit board and the circuit board itself.
- ▶ Remove the 4 screws on the frame at the bottom using a size 4 hexagon screwdriver.
- ▶ Remove the rear frame from the holder.
- ▶ Remove the two screws on the fixed water connection (see diagram) using a size PH1 cross head screwdriver (these screws are no longer required).
- ▶ Raise the fixed water connection and flow meter slightly and turn to the left.
- ▶ Remove the flow meter.
- ▶ Remove the two screw-in connectors with o-rings from the flow meter (see diagram).



Pre-assembly of flow meter spare parts set

- ▶ Pre-assemble the flow meter spare parts set as shown.



Rear frame with support ribs

- ▶ Snap both support ribs off the rear frame by hand.



Rear frame with support ribs removed



Flow meter spare parts set installed

- ▶ Install the pre-assembled flow meter spare parts set.
- ☑ The M6 hexagon washer or chamfer is fitted on the fixed water connection onto the underside of the "Flow meter holder" (see mark in the diagram).
- ☑ To fasten the fixed water connection, the slightly longer M4x10 hexagon fillister cross head screws supplied can be used.
- ▶ Re-assemble the components by following these steps in the reverse order.

(EN) This page is intentionally left blank.

(DE) Diese Seite wurde absichtlich frei gelassen.

(FR) Cette page est laissée vide intentionnellement.

(ES) Esta página se ha dejado en blanco intencionalmente