

T.I. no.: 2015 - 07 Updated: -	Topic: Air pump
--	------------------------

Date: 13.04.2015
Affected machines: SCAP/TouchIT
From serial number: 1519....
From date: CW 19

Priority	
	High
	Medium
X	Low

Need for action	
	As soon as possible
	On next visit to the machine
X	FYI only

TABLE OF CONTENTS

Overview.....	1
Installation instructions	2
Overview of SCA with milk system CS	2
Conversion of air pump 069448 to new air pump 066311	3
Overview of SCA with milk system 2.0	4
Differences to SCA with milk system CS	4
Beverage setting.....	4

OVERVIEW

A new air pump (KNF PMM1109-NMP830) is now available under article number 066311. Previously used air pump 069448 can be replaced 1:1 with new air pump 066311. The air pump can be used in place of the temperature protection system.



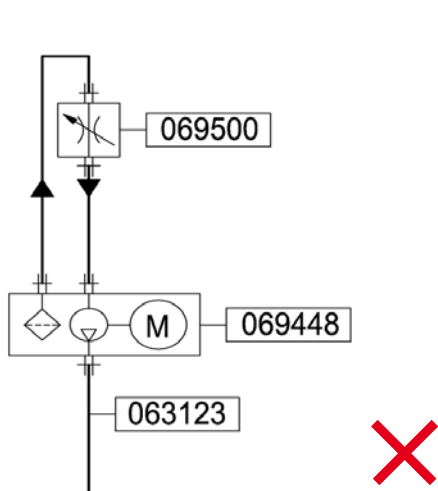
1. Air pump MNF PMM1109-NMP830 (066311)
2. Screw-in sound absorber (069569)

NEW AIR PUMP KNF PMM1109-NMP830

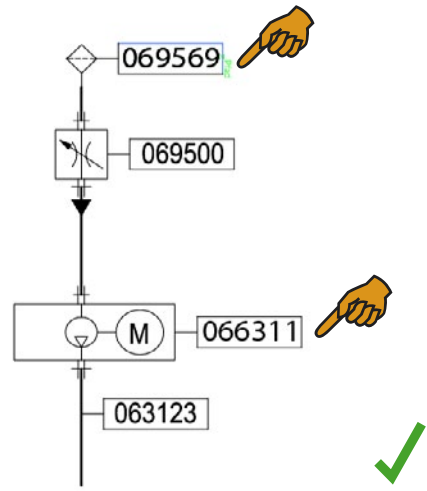
INSTALLATION INSTRUCTIONS

Overview of SCA with milk system CS

Schematic layout with old air pump 069448 left and with new air pump 066311 and screw-in sound absorber right.



AIR PUMP 069448 WITH NEEDLE VALVE



AIR PUMP 066311 WITH SCREW-IN SOUND ABSORBER AND NEEDLE VALVE

Hose opening with large needle valve



AIR PUMP 069448



NEW AIR PUMP 066311 WITH SCREW-IN SOUND ABSORBER

Hose opening with small needle valve

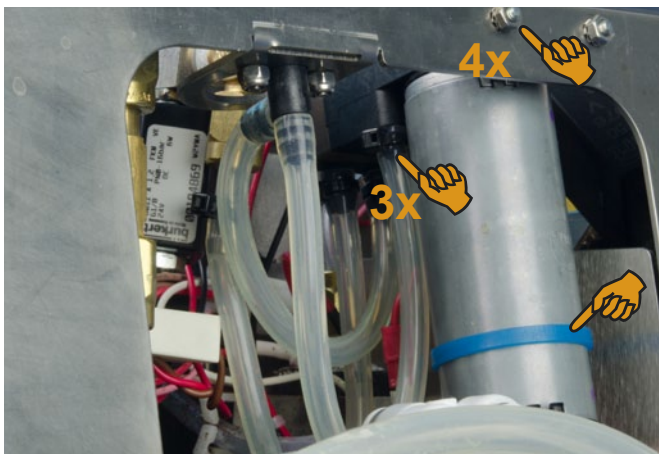


AIR PUMP 069448



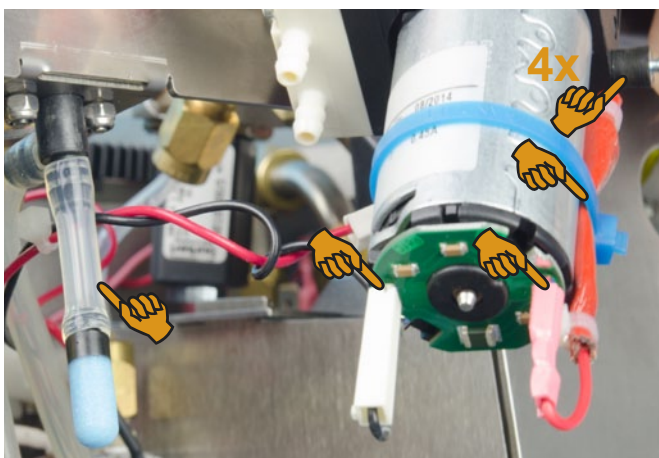
NEW AIR PUMP 066311 WITH SCREW-IN SOUND ABSORBER

Conversion of air pump 069448 to new air pump 066311



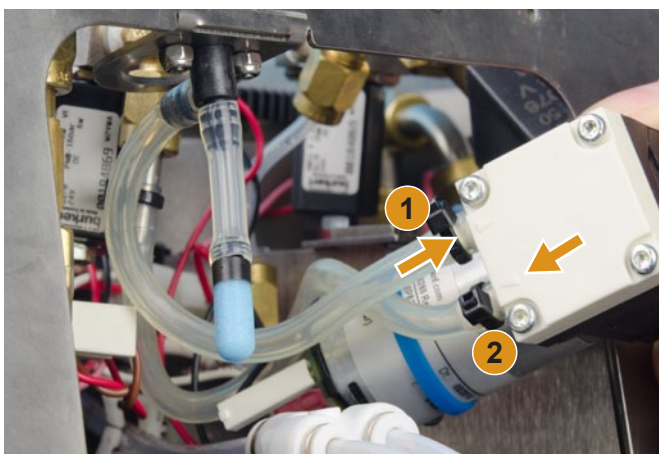
AIR PUMP 069448 INSTALLED

- ▶ Loosen 4x hex nuts, remove 4x serrated washers and standard air pump.
- ▶ Screw 4x vibration absorbers out of air pump.
- ▶ Remove cable ties.
- ▶ Remove 2x electrical cables.
- ▶ Remove 3x black cable ties and hoses from the air pump.



PREPARING NEW AIR PUMP 066311

- ▶ Install 4x vibration absorbers on the new air pump.
- ▶ Install electrical cables with the correct polarity (red=plus, black=minus).
- ▶ Fasten the connection cable with the safety fuse to the air pump motor with a cable tie to ensure the cable is properly laid.
- ▶ Install screw-in sound absorber on the needle valve with a 2 cm hose piece.
- If the large needle valve is installed, the sound absorber can be directly screwed into the needle valve instead of the hose adapter.

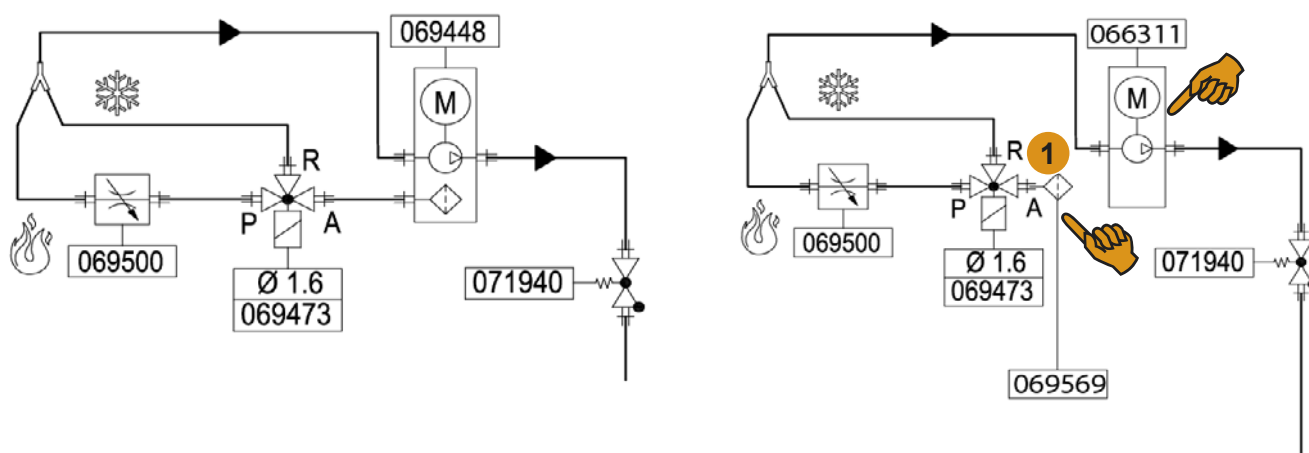


INSTALLING NEW AIR PUMP 066311

- ▶ Fit the hoses and secure with 2.5x100 cable ties.
 1. From the needle valve to the air pump inlet
 2. From the air pump outlet to the milk system
- ▶ Fit the air pump with 4x serrated washers and 4x hexagonal nuts.

Overview of SCA with milk system 2.0

Schematic layout with standard air pump 069448 left and with new air pump 066311 and screw-in sound absorber right.

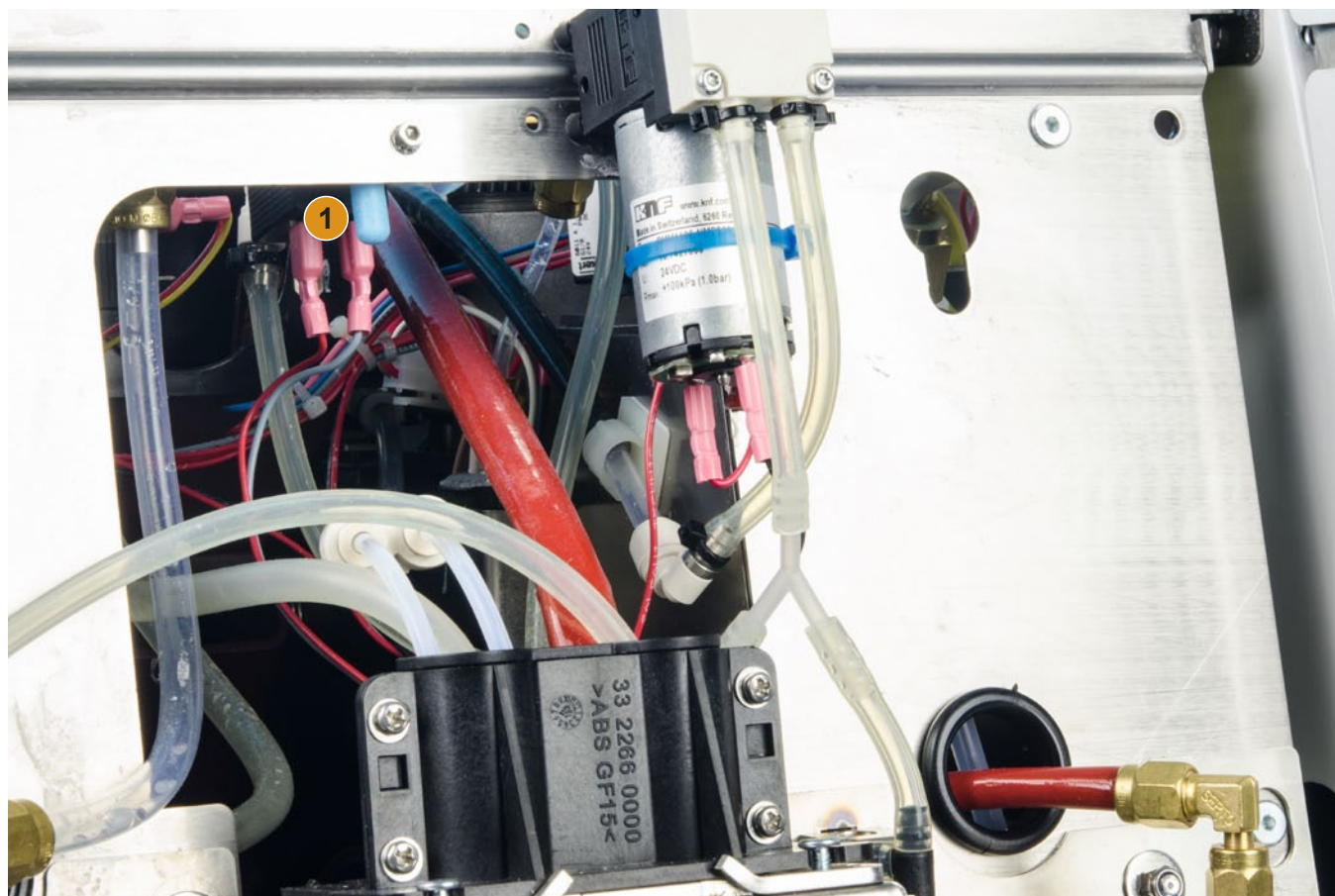


AIR PUMP 069448

NEW AIR PUMP 066311 WITH SCREW-IN SOUND ABSORBER

Differences to SCA with milk system CS

The screw-in sound absorber is installed on the solenoid valve (1) instead of on the needle valve as in milk system CS.



NEW AIR PUMP 066311 WITH SCREW-IN SOUND ABSORBER

BEVERAGE SETTING

A minor adaptation of the needle valve may be necessary for tolerance reasons.