

IMPORTANT Service Memo Instruction 2019-011 which machine to check resistor cable fan

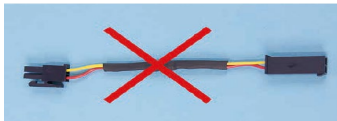
Machine: Barista One / Schaerer Coffee Prime
 Titel: Instruction which machine to check/replace/place resistor cable fan

Dear All,

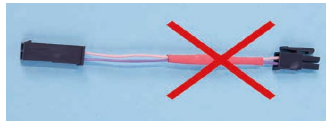
This is an instruction about which machines to check the resistor cable of the fan.
 The new number for the **WHITE** cable is: 55121551/ 075251 ADAPTER CABLE FAN BO/SCP NEW

Also check all local stock locations and throw away the cables with the **BLACK** and **RED** isolation.
RED isolation should also to be replaced as the **WHITE** one is performing better.

BLACK isolation is **INCORRECT** ✘ :



RED isolation is **INCORRECT** ✘ :



WHITE isolation is **CORRECT** ✔ :



The machines already placed in the markets needs to be updated with the new **WHITE** cable as following:

Priority 1: Machines produced in **CW 31 – 45 (serial no.'s are: 1931... - 1945...)** need to be updated first.
 These machines has to be visited pro-active within 3 weeks after receiving the **WHITE** cable.
 Take in account what is feasible but it is strongly recommended to complete this action within these 3 weeks.

Priority 2: Machines produced in **CW 01 – 30 (serial no.'s are: 1901... - 1930...)** can be updated during a regular service visit.

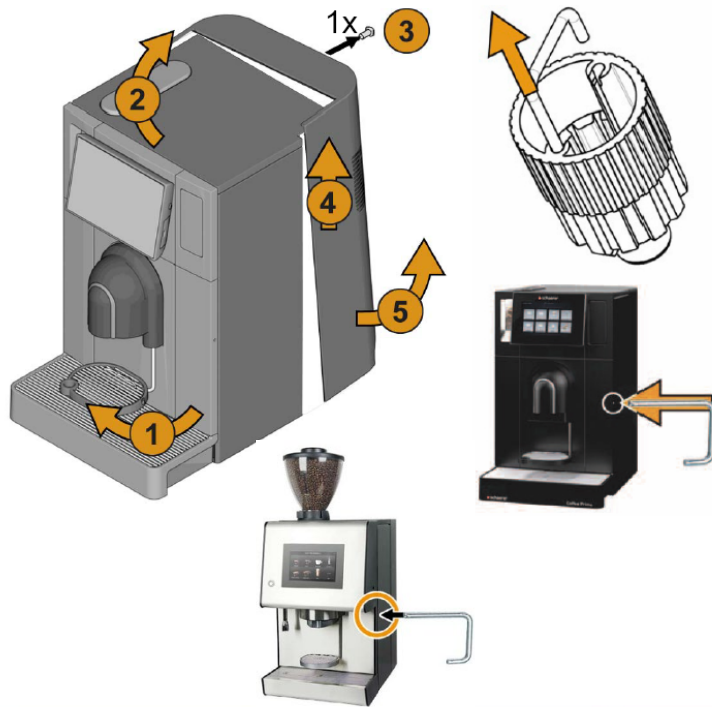
All machines on stock with serial no. up to 1945..... need to be updated with the new **WHITE** cable before placed at customers. As we already informed in the service memo 2019-010 we advise to do this during installation. Be aware that in this memo is mentioned that the **RED** cable is ok but this one has **also to be replaced for the WHITE** cable.

Machines produced from **CW 48, (serial no. 1948.....)** will have the right **WHITE** cable in the machine.

Instruction how to place the **WHITE** cable, see next pages.

Dismantle:

For the Barista One first take of the bean container.



Disassembling housing

- ▶ Switch off the machine and disconnect it from the mains supply.
- ▶ [1] Open front doors with the clip in the multi-tool.
- ▶ [2] Lift the machine cover slightly.
- ▶ [3] Loosen Phillips-head screw (PH3) in the machine rear.
- ▶ [4] Lightly push the rear housing upwards and...
- ▶ [5] Extend to the upper rear at the same time.
- ▶ Place housing aside.
- ☑ The rear housing is disassembled.



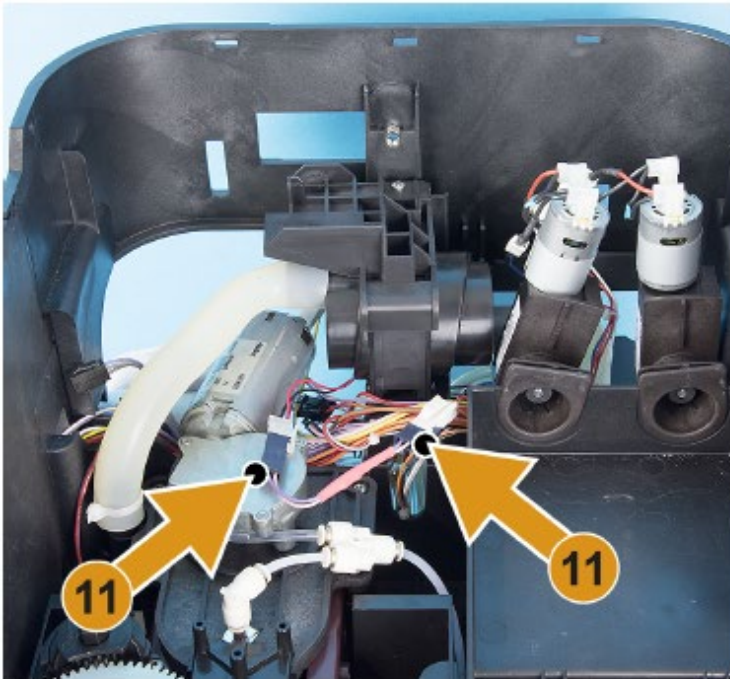
Disassembling cover

- ▶ [6] Disconnect rear plug-in connector for cover lighting.
- ▶ [7] Pull out both axis bolts at the left and right.
- ▶ Lift cover including gas cylinder from the machine and place it aside.
- ☑ The machine cover is removed.



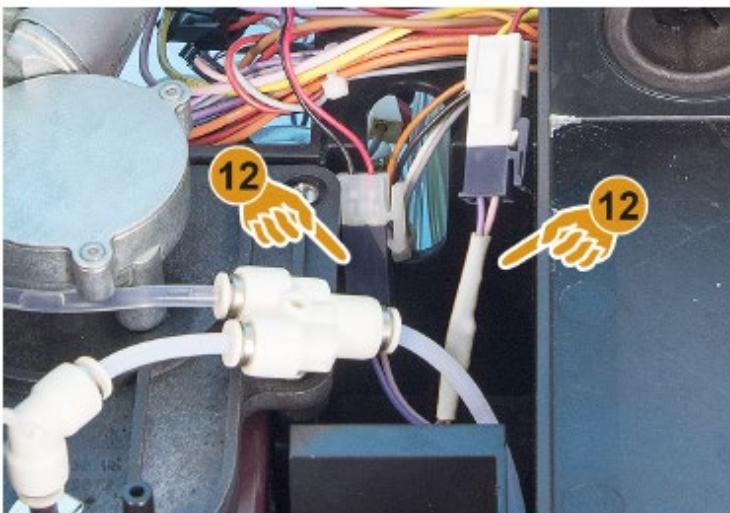
Bean and powder container disassembly

- ▶ [8] Lock bean hopper by pulling out the green slider.
- ▶ Raise the bean hopper out of the machine.
- ▶ [9] Pull powder container out of the machine.
- ▶ [10] Unlock three locks from the cover at the rear.
- ▶ Remove cover upwards and place it aside.
- ☑ The adapter cable is now accessible.



Replacing axial fan adapter cable

- ▶ [11] Disconnect plug-in connectors from the axial fan feed, properly dispose of old adapter cable.
- ▶ Connect new adapter cable 075251 to the plug-in connectors.
- ☑ The new adapter cable is installed.



Correctly placing the adapter cable

It is important that the adapter cable does not make direct contact to other cables.

- ▶ [12] Separate adapter cable as shown in the left figure by placing the cable in the opening
- ☑ The new adapter cable is correctly placed in the machine.

Last Step:

Rebuilt all steps backwards.

If you have replaced the cable with the **BLACK** or **RED** isolation don't forget to make a picture of the cable including the serial number of the machine and send this picture to your technical manger to collect these and send this information to the responsible customer support manager from the global department.