

T.I. no.: 2020 - 13 Updated: -	Topic: Wiring and plug-in connector
-----------------------------------	-------------------------------------

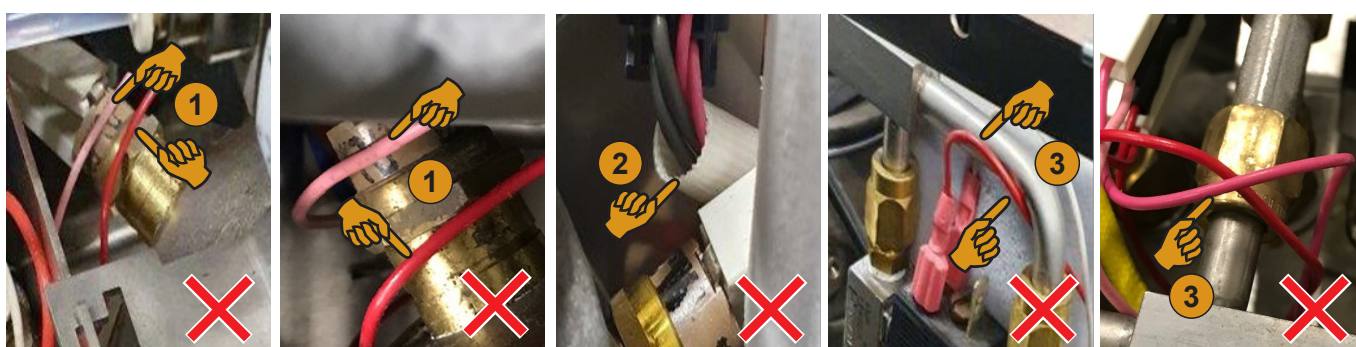
<b>Date:</b> 11.05.2020
<b>Affected machines:</b> All
<b>From serial number:</b> All
<b>As of date:</b> All

Priority	
	High
X	Medium
	Low

Need for action	
	As soon as possible
X	On next visit to the machine
	FYI only

## CHECKING WIRING

### Wiring near safety thermostats and hot surfaces



### IMPORTANT

Dangerous cable routing can damage the machine. Serious dangers are:

- [1] Low- and mains voltage cables are located directly on the safety thermostat.
- [2] Low- and mains voltage cables run very close to the safety thermostat.
- [3] Low- and mains voltage cables are located close to hot surfaces.

► Check cable routing and correct if necessary.

## PLUG-IN CONNECTORS

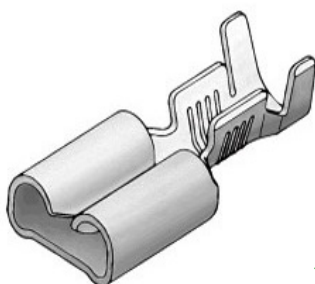
### Crimped plug-in connector



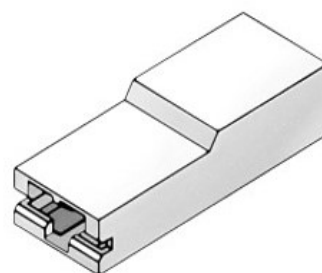
Defective, bent plug-in connector



Non-approved plug-in connector



Approved plug-in connector 065,258  
6.3x0.8mm for 1.5-2.5mm<sup>2</sup>



Insulator for plug-in connector 065,246  
Glow wire tested (GWT)

#### IMPORTANT

A defective plug-in connector can damage the machine.

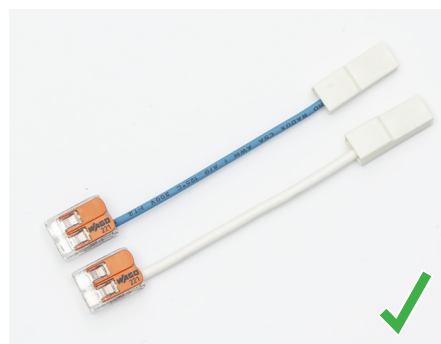
- ▶ Do not bent plug-in connector ex works.
- ▶ Replace plug-in connector if defective, damaged or discoloured.
- ▶ Correctly attach the plug-in connector with the correct material and tools.
- ▶ Use only approved plug-in connectors. If these are not available, use repair set (075,294).



Wire stripper



Crimper



Repair set 075,294

#### NOTE

It takes some practice to learn to crimp properly. International technical support offers crimp trainings and electrical safety trainings if needed.