


T.I. no.: 2019 - 18 Updated: -	Topic: SCP axial fan adapter cable
---	---

Date: 28.11.2019	Priority	Need for action
Affected machines: SCP	X High	X As soon as possible
From serial number: 1916 XXXX to 1947 XXXX	X Medium	X On next visit to the machine
As of date: —	Low	FYI only


AXIAL FAN ADAPTER CABLE

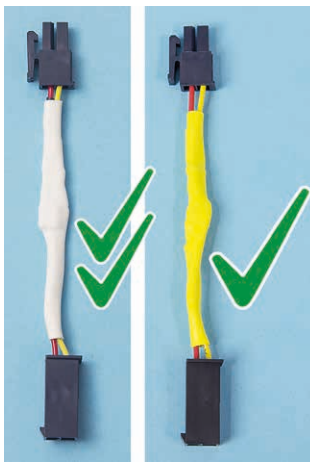
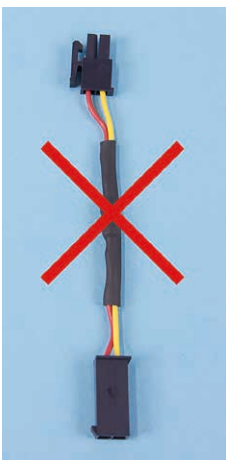

This technical information 2019-18 replaces technical information 2019-17!

 **IMPORTANT**
 For safety reasons, we strongly recommend making the adaptation described in the following as soon as possible. Adapter cable 075251 can be ordered from Schaeerer AG free of cost until 03/2020.

DESCRIPTION OF THE PROBLEM
 For various reasons, it is possible for overvoltage to occur for short times in the adapter cable to the axial fan. Overheating as well as possible short circuits cannot be completely ruled out.

SOLUTION OF THE PROBLEM
 The adapter cable (white shrinking tube) from SN 1948/XXXXX contains safety devices which protect against excessive voltage and short circuits on both sides.


 **NEED FOR ACTION**
 Different adapter cables have been used in the past. All adapter cables with black shrink tubing must be replaced without fail and as soon as possible. Adapter cables with red shrink tubing must be replaced during the next fault repair or service call. For machines from SN1901 to 1915, we recommend retrofitting adapter cable 075251 to protect the fan.

	New axial fan adapter cable		Current axial fan adapter cable	Old axial fan adapter cable
Article number	075251	075251	075183	075183
Shrink tubing colour	white	Yellow	Black	Red
Installed from serial number	1948/XXXXX	1946/XXXXX	1931/XXXXX	1916/XXXXX
Installed up to serial number	—	1947/XXXXX	1945/XXXXX	1930/XXXXX
				

Pending action

1. Determine machine serial number.
2. If needed, disassemble rear housing and cover from the machine.
3. Replace old adapter cable.

Checking serial number on serial plate

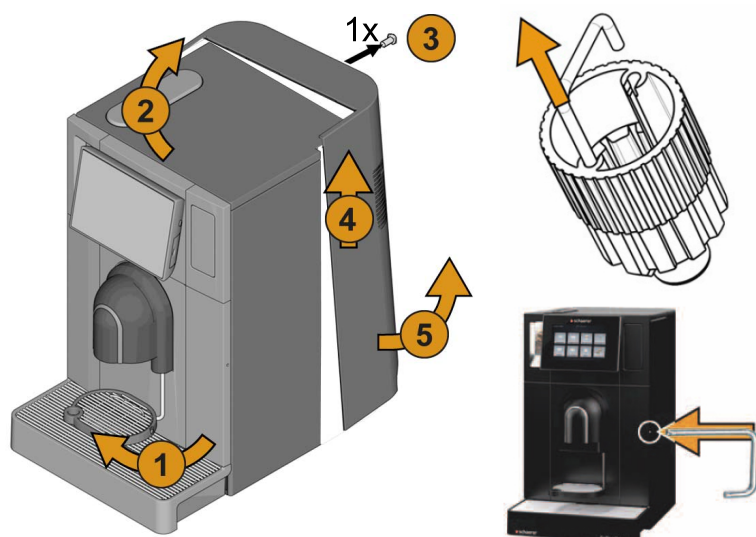
schaerer EAC CE 	
Designation	coffee machine
Manufacturer	Schaerer AG, Allmendweg 8 4528 Zuchwil, Switzerland
Typ	SCP
Serial No.	1947 XXXX
Nominal pressure	1.6 MPa (16 bar)
main pressure	0 – 1.0 MPa (0 – 10 bar)
Electrical Ratings	2000-2400W 220-240V 2~ 50/60Hz
Fuse on-site	10-16A <i>made in Switzerland</i>

The serial plate is located on the:

- Rear of the machine directly underneath the mains connection and main switch.
- Inside the machine directly behind the drinking water tank on the rear machine panel.
- ▶ Replace adapter cable (red) from serial number 1916 to 1930 during the next fault repair or service call.
- ▶ Adapter cables (black) from serial number 1931 to 1945 must be replaced with 075251 immediately.

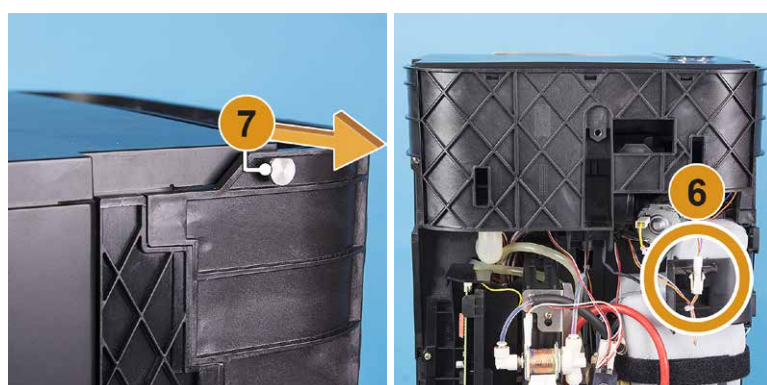
Figure 1: Serial plate serial number example

Replacing axial fan adapter cable



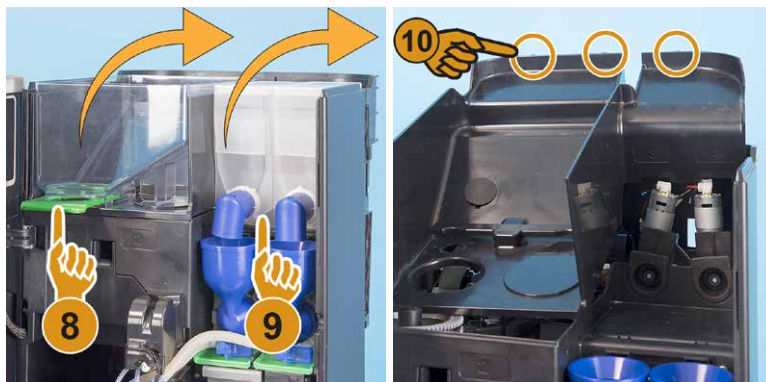
Disassembling housing

- ▶ Switch off the machine and disconnect it from the mains supply.
- ▶ [1] Open front doors with the clip in the multi-tool.
- ▶ [2] Lift the machine cover slightly.
- ▶ [3] Loosen Phillips-head screw (PH3) in the machine rear.
- ▶ [4] Lightly push the rear housing upwards and...
- ▶ [5] Extend to the upper rear at the same time.
- ▶ Place housing aside.
- ☑ The rear housing is disassembled.



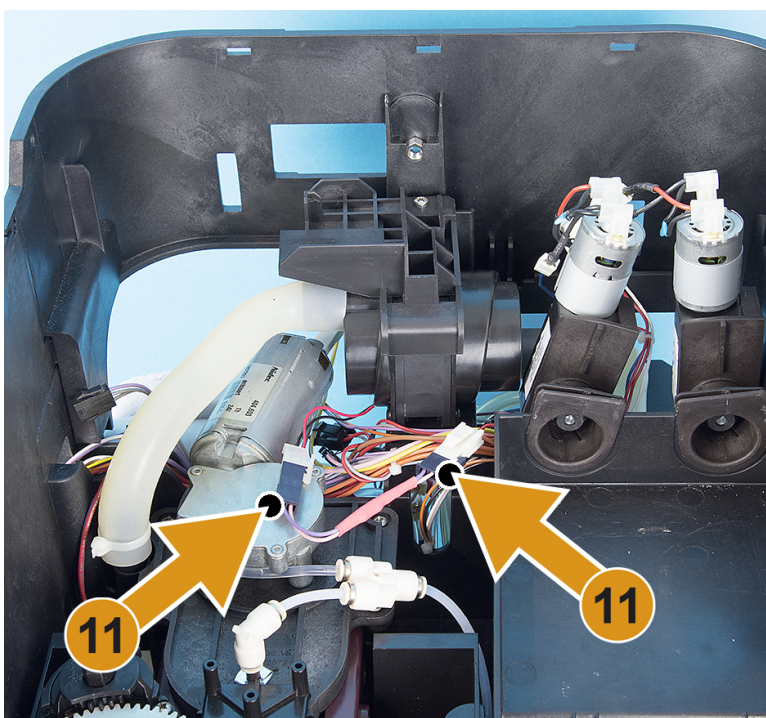
Disassembling cover

- ▶ [6] Disconnect rear plug-in connector for cover lighting.
- ▶ [7] Pull out both axis bolts at the left and right.
- ▶ Lift cover including gas cylinder from the machine and place it aside.
- ☑ The machine cover is removed.



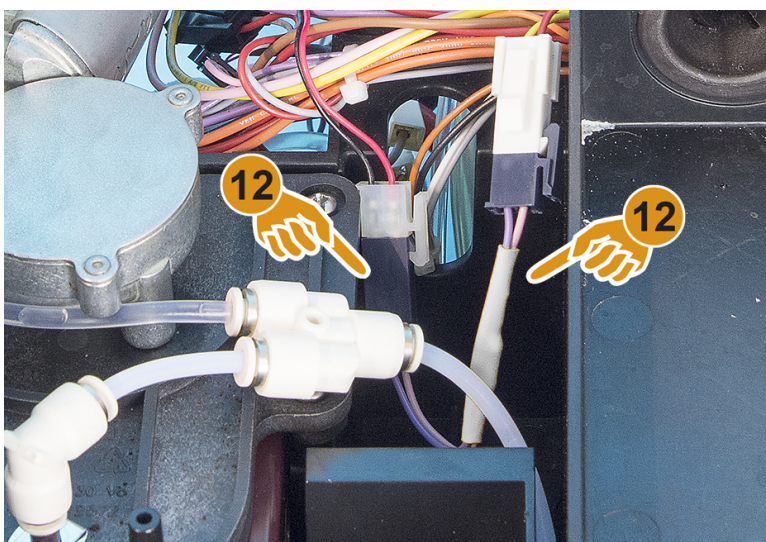
Bean and powder container disassembly

- ▶ [8] Lock bean hopper by pulling out the green slider.
- ▶ Raise the bean hopper out of the machine.
- ▶ [9] Pull powder container out of the machine.
- ▶ [10] Unlock three locks from the cover at the rear.
- ▶ Remove cover upwards and place it aside.
- ☑ The adapter cable is now accessible.



Replacing axial fan adapter cable

- ▶ [11] Disconnect plug-in connectors from the axial fan feed, properly dispose of old adapter cable.
- ▶ Connect new adapter cable 075251 to the plug-in connectors.
- ☑ The new adapter cable is installed.



Correctly placing the adapter cable

It is important that the adapter cable does not make direct contact to other cables.

- ▶ [12] Separate adapter cable as shown in the left figure by placing the cable in the opening
- ☑ The new adapter cable is correctly placed in the machine.

Assembly mounting steps

If the new adapter cable is inserted, the machine can be assembled in the reverse order of the disassembly steps.

1. Lay machine cover back on the machine and lead the cable from the lighting to the plug-in connector from the top to the bottom.
2. Connect plug-in connector from the lighting.
3. Position cover correctly on the machine. Make sure the gas cylinder bolt is placed correctly in the guide [13], see figures 2.

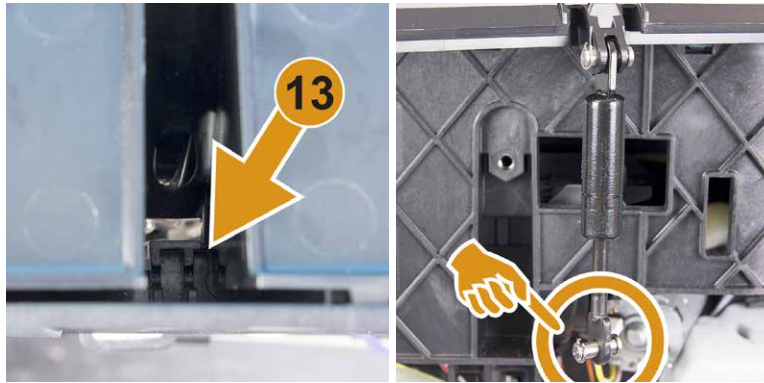


Figure 2: Gas cylinder bolt guide

4. Reinsert both axis bolts on the left and right.
 5. Reinsert the bean/powder container into the machine.
 6. Lightly place rear housing back on the machine from the top and assemble.
 7. Refasten the housing with Phillips-head screw (PH03).
 8. Switch the machine back on.
- The machine is again ready for use.
 - The axial fan is now activated via the new adapter cable 075251.