

<b>T.I. no.:</b> 2019 - 06 <b>Updated:</b> -	<b>Topic:</b> Defect powder system axial fan
---	--

<b>Date:</b> 09.05.2019	<b>Priority</b>	<b>Need for action</b>
<b>Affected machines:</b> SCP	High	As soon as possible
<b>From serial number:</b> 1901.../	X Medium	X On next visit to the machine
<b>As of date:</b> 01.2019	Low	FYI only

**DESCRIPTION OF THE PROBLEM**

It is probable that low mains overvoltage will destroy the electronics in the axial fan for the powder system in some cases. The damage usually goes unnoticed.

**Problems**

If the defective axial fan goes unnoticed for long periods of time, there is a chance that the choco powder or the topping powder will clump. The powder can no longer dissolve properly in the added water.

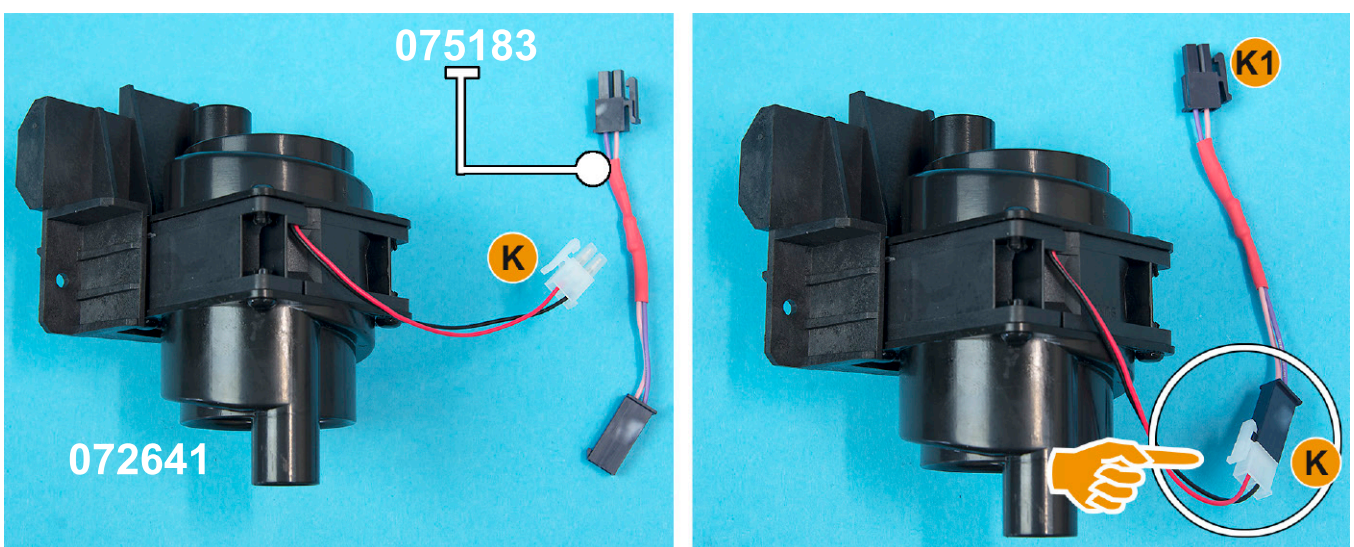
**Solution to the problem**

A defective powder system axial fan is replaced. The axial fan is also protected from overvoltage with an interconnected additional resistor [075183].

**WARRANTY FROM SCHAERER AG**

Defective axial fans from machine number 1901\_XXXXXX are replaced by Schaefer AG for free. An axial fan (072641), including additional resistor (075183), can be requested from Schaefer customer service with specification of the machine number.

## AXIAL FAN WITH ADDITIONAL RESISTOR



## REPLACING AXIAL FAN

### Prerequisites and required tools

- Machine is switched off
  - Phillips screwdriver PH3
  - Phillips screwdriver PH1
  - Replacement axial fan 07264
  - Separate additional resistor 075183
- ▶ Switch off the machine in advance and disconnect it from the mains.

### Removing rear housing and machine cover

- ▶ Open the front doors with special tool [A] from the multi-tool.
- ▶ Release and remove the rear housing by loosening the Phillips screw [B] with PH3.
- ▶ Pull the entire housing out upwards and remove.
- ▶ Disconnect plug [C] from the cap detection.
- ▶ Fold the machine cover [D] upwards.
- ▶ Manually remove both hinges from the machine cover on the left [E] and right [F].
- ▶ Pull out cable [G] from the cap detection upwards and completely remove the machine cover.

### Removing inner cover

- ▶ Slightly lift cover [H] from the front and simultaneously loosen the 3 rear notches [J].
- The cover is loosened and can be removed upwards.
- ▶ Remove the cover.
- The connection plug [K], the clamp mounting [L] and the mounting screw [M] are now accessible.

### Disassembling axial fan

- ▶ Disconnect connection plug [C] of the axial fan.
- ▶ Release and remove the clamp mounting [L] by loosening the Phillips screw [B] with PH1.
- ▶ Remove clamp mounting [L].
- ▶ Remove both supply and exhaust air ducts [N] from the axial fan.
- The axial fan can be removed from the machine.

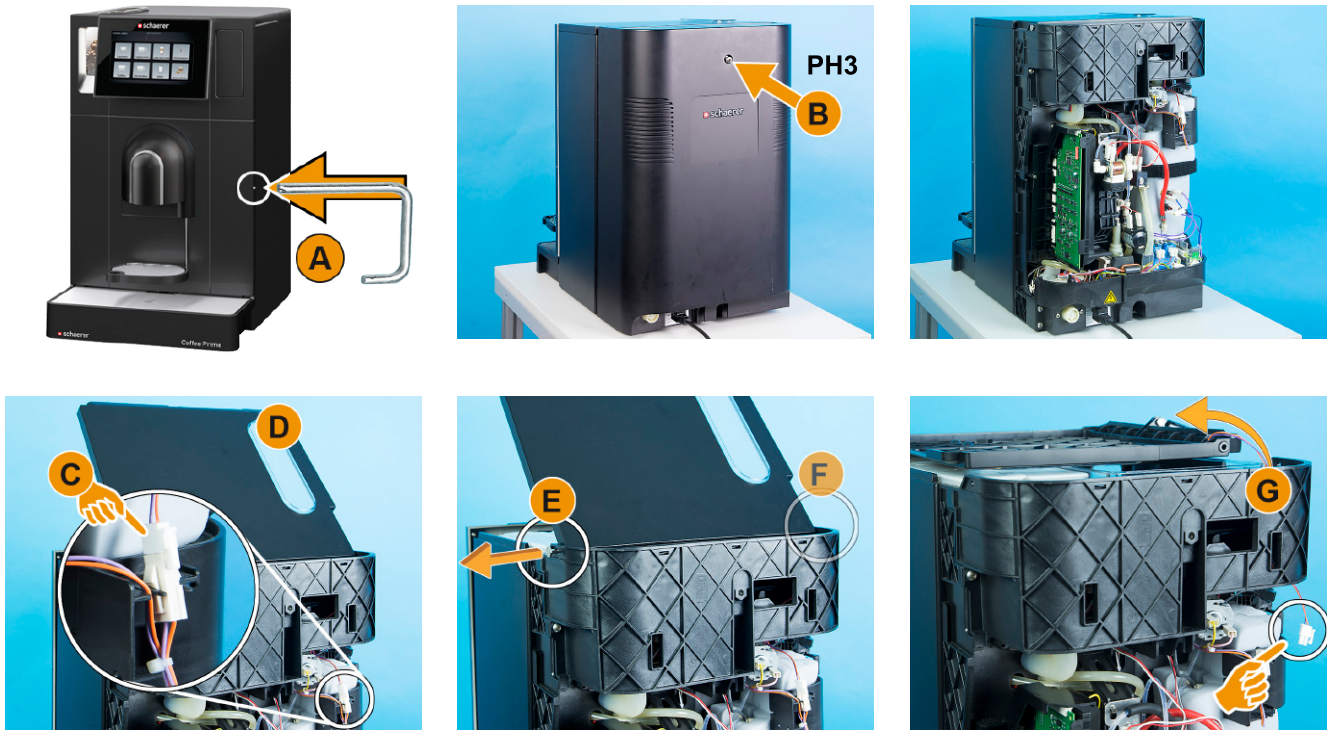
### Assembling axial fan

- ▶ Connect new axial fan (072641) to additional resistor (075183) using plug [K].
- ▶ Assemble new axial fan with inserted additional resistor in the reverse order as described above.
- Axial fan connection plug [K1] is connected to the machine.

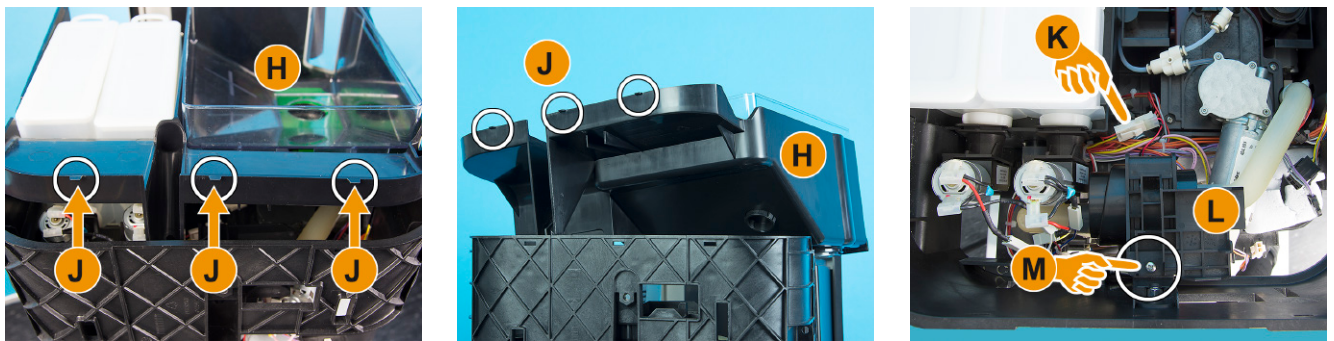
### Mounting cover and housing

- ▶ Reassemble cover, machine cover and rear housing in reverse order as described above.
- The axial fan for the SCP powder system has been replaced and is now protected from low mains overvoltage by the interconnected additional resistor.

### REMOVING REAR HOUSING AND MACHINE COVER



### REMOVING INNER COVER



### DISASSEMBLING AXIAL FAN

