

T.I. no.: 2018 - 18 Updated: -	Topic: SC Soul software 3.4.9 and 3.2.4
--	--

Date: 13.08.2018	Priority	Need for action
Affected machines: SC Soul	High	As soon as possible
From serial number: 1832../	X Medium	X On next visit to the machine
As of date: -	Low	FYI only

NEW FUNCTIONS AND IMPROVEMENTS

The following is an overview of the new functions in 3.4.9:

New functions:

- Cleaning manager
- Hardware validation during commissioning
- Available beverage templates depending on machine configuration

Improvements:

- Flow meter error after about 50% cleaning fixed
- Heat management optimised
- Heating quick info is displayed correctly
- Filling is done correctly even if the waste water tank is full
- Cashless payment process is recorded correctly
- Cleaning instructions are no longer displayed after cleaning has been carried out
- Optimised milk path rinsing
- Beverage names language-specific
- Beverage size selection adapted
- Recipes can be cancelled even with the "Water tank empty" message active
- BSP update is also used for versions < 3.0.2
- Template for beverages with powdered milk added
- Heat management optimised
- EVA-DTS hidden
- Restart after a change in the Media Manager
- Reduction of the flow rate of the water pump no longer leads to a water flow error
- The heating process is displayed correctly again in the Quick Info

The following is an overview of the new functions in 3.2.4:

New functions:

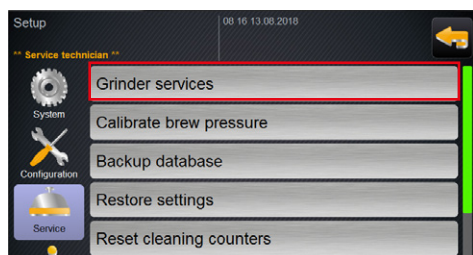
- "Grinder service" menu
- If the Barista button is activated, it is always visible during beverage selection

Improvements:

- Coffee step is always stored correctly
- If no beverages are stored on the menu card, the Service menu is displayed directly after the machine starts.
- Max/Min grind quantity with cooled coffee step corrected
- Improved operation for language selection
- Beverage icons can be hidden
- Outlet rinsing is also triggered after cooled beverages
- Steam boiler timeout is correctly recorded in the error statistics
- "Grounds container full" message is displayed even after the machine has been switched off unexpectedly
- Ukrainian added
- "Milk empty" message is hidden again after the milk container has been filled
- Cleaning of the Best Foam mixer optimised

Grinder configuration

To adjust the grinding level, proceed as described below:



- ▶ Open the [Service] -> [Grinder services] menu.
- The "Grinder services" menu opens.



Various submenus are available in the "Grinder service" menu:

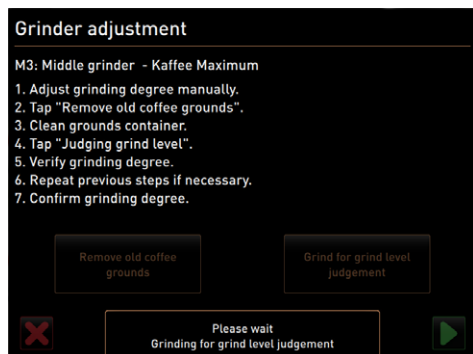
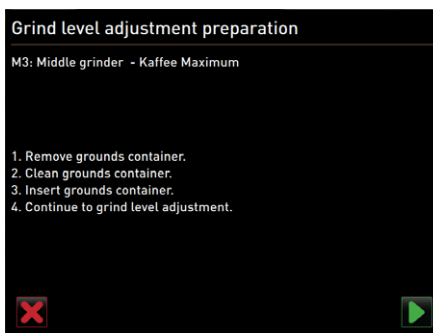
- Grinding discs replacement
- Grinder adjustment
- Grinder calibration
- ▶ The grinders are set independently of one another.



Replacing the grinding gauges:

- ▶ Actuate the [Grinding discs replacement] field.
- The menu opens.

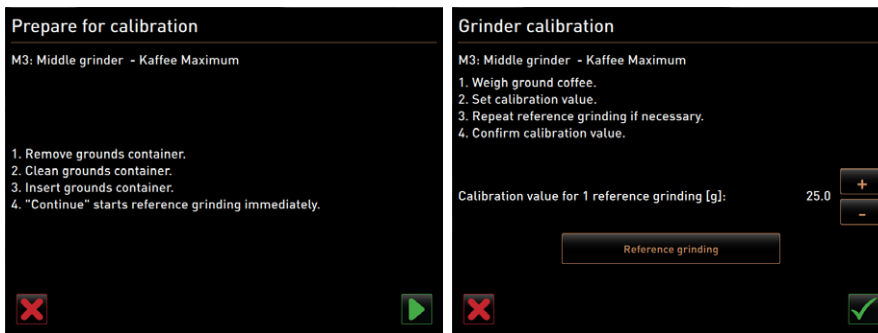
- ▶ Follow the instructions on the display.



Adjusting the grinding level:

- ▶ Follow the instructions on the display.
- ▶ Adjust until the desired grinding level is reached.

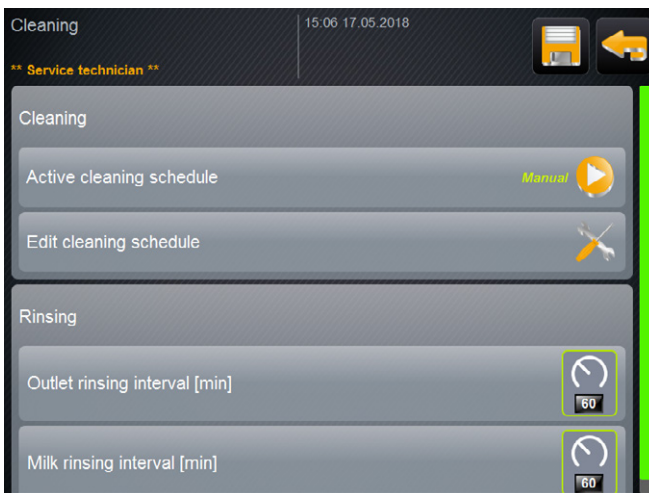
- ▶ Follow the instructions on the display.



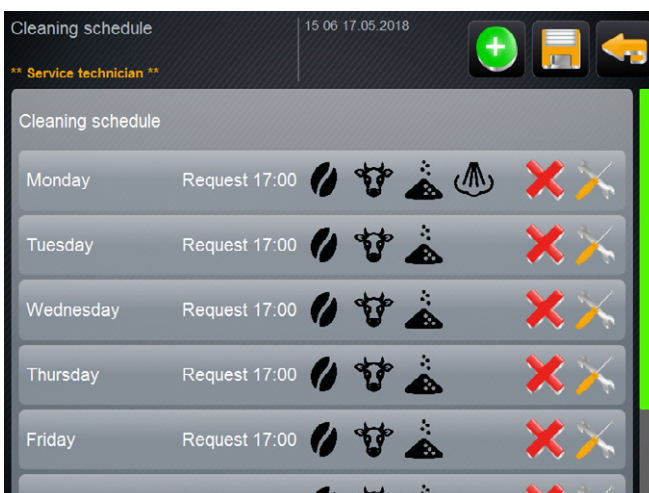
Cleaning manager

Cleaning can be adjusted individually with the new cleaning manager. The systems to be cleaned for each day can be defined, as can whether the cleaning will be forced (beverage dispensing lock) or whether only an instruction will be displayed. In addition, a period of time can be defined in which cleaning can be recognised before the defined time and from when the beverage dispensing lock can be activated after the defined time.

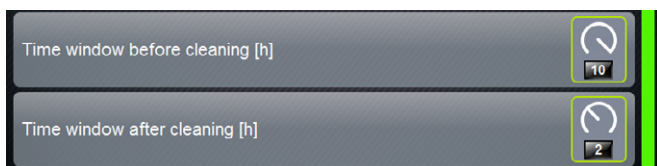
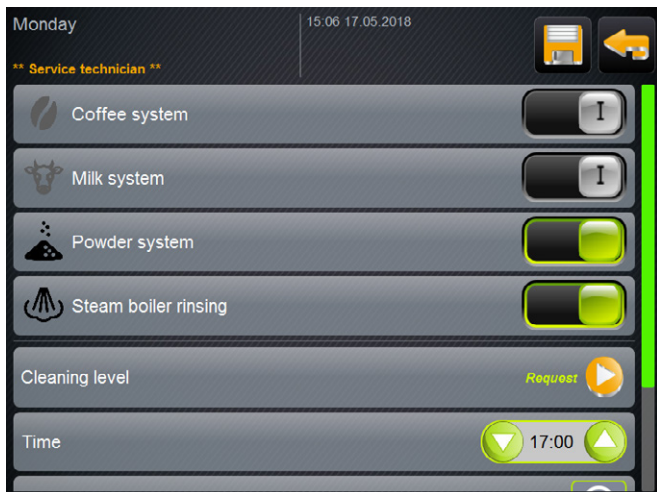
When installing software 3.4.x, the cleaning settings which were already made are adopted. If no settings are made, the [SchaererDefault] cleaning schedule is set.



- ▶ To do so, select the [Manual] option in the "Active cleaning schedule" parameter.
- ▶ Then select the "Adjust cleaning schedule" menu.
- [SchaererDefault] is the Schaerer standard cleaning schedule. Only the cleaning level can be adjusted in this schedule.
 - > Daily cleaning of coffee, milk and powder, also steam boiler rinsing on Tuesday.



- ▶ The setting for the respective day can be selected using the tool symbol.



- ▶ Individual systems can be activated and deactivated in the daily schedule. The cleanings are dependent on one another, e.g. the milk system cannot be cleaned without the coffee system being cleaned. Only the coffee and powder system can be started independently of other cleanings.
- ▶ The level of cleaning can also be set.
 - None -> No message appears.
 - Instruction -> A cleaning instruction appears. It is still possible to dispense beverages.
 - Forced -> If the cleaning is not done, beverage dispensing is locked.
- ▶ [Time] can be used to set when the cleaning instruction should appear.

- ▶ The [Time window before cleaning] parameter defines at which time BEFORE the set time a cleaning that was carried out should be recognised (A).
- ▶ The [Time window after cleaning] parameter defines from when beverage dispensing should be locked if forcing is activated, or when the message turns from orange to red if the instruction is active (B).

