

T.I. no.: 2017 - 92 Updated: -	Topic: JDE B0 Software 3.40.0 and 3.41.1
---	---

Date: 03/07/2017	Priority	Need for action
Affected machines: JDE B0	High	As soon as possible
From serial number: -	X Medium	X On next visit to the machine
As of date: -	Low	FYI only

NEW FUNCTIONS AND IMPROVEMENTS IN 3.40.0

The following is an overview of the improvements:

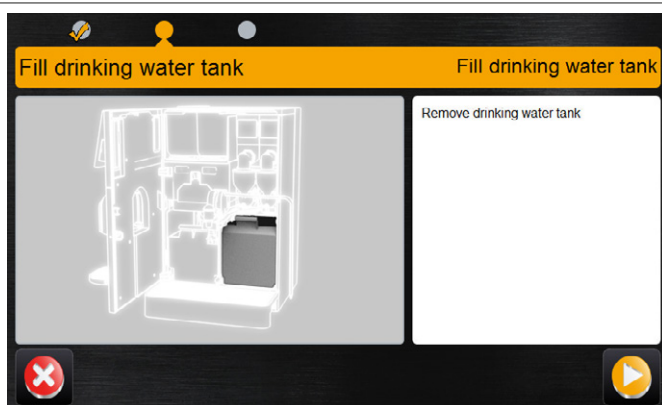
Improvements:

- Shortened commissioning after running the "cool-down" function.
- The payment instruction is no longer displayed if the "Free vend" mode is activated.
- Powerpack recipes integrated.
- If the 3 kW steam boiler is selected during commissioning, the Powerpack recipes are loaded.
- Beverage dispensing is interrupted if the drip tray is full.
- Beverage name in the telemetry corresponds to the beverage name on the machine (in English).
- Grounds container capacity can be set to 150 pieces (for under-counter grounds container).
- New GUI languages added (FR, DA, DE, UK).
Language designation for UK corrected in the language selection.
- Cyrillic characters are correctly displayed.
- Incorrect use of "more" and "back" corrected in EVA DTS.
- Water in the brewing unit - adjustment of relief through the valves. This prevents hot water from entering the brewing unit.
- Removing the water tank can be confirmed in the "Fill water tank" wizard using the field.

Wizard when water tank is empty

The field was added to the "Fill water tank" field. This makes it possible to remove the water tank.

"Refill water tank" wizard



NEW FUNCTIONS AND IMPROVEMENTS IN 3.41.1

The following is an overview of the improvements:

Improvements:

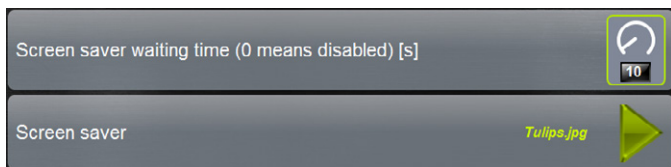
- The "Strokes per key" function now works properly.
- New brands and images available.
- Smart info if the tank is empty now works properly.
- New software versions.
- Hot water source database error has been fixed.
- "Extra espresso shot" is deleted if the beverage is cancelled.
- The external hot water button works even if the bean hopper is empty.

New functions:

- User-defined images can be used for the screensaver.
- A under-counter grounds container can be used. This makes it possible to increase the capacity parameter to 175 coffee grounds cake.

Screensaver

A user-defined image can be used via the [Screensaver] parameter. The images are loaded onto the machine via the media manager.



Grounds container

The [Grounds container position] parameter is used to determine whether the internal or an external grounds container is used. If the under-counter grounds container is active, the capacity can be increased to 175 coffee grounds cake.

