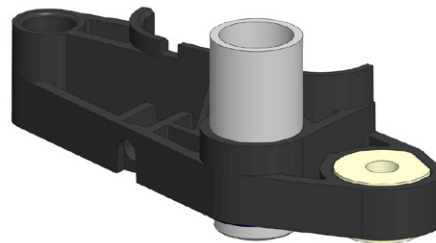


<b>T.I. no.:</b> 2017 - 26 <b>Updated:</b> -	<b>Topic:</b> AHA beverage outlet holder
---	--

<b>Date:</b> 22.11.2017	<b>Priority</b>	<b>Need for action</b>
<b>Affected machines:</b> SCA P with AHA and SCA P BF	High	As soon as possible
<b>From serial number:</b> 1740xxxxxx	X Medium	X On next visit to the machine
<b>As of date:</b> 1/10/2017	Low	FYI only

**INFORMATION**

The holder for the automatic height-adjustable beverage outlet (AHA) has been optimised. The guide in the "Beverage outlet holder" 072390 is getting a new linear ball bearing. The optimised gliding property ensures judder-free height adjustment in the long term.




**STANDARD**

Machines starting with SN 1740xxxxxx receive the optimised "Beverage outlet holder" 072390 ex works.

**RETROFITTING**

If required, the previous "Beverage outlet holder" can be replaced on machines up to SN 1739xxxxxx. The new "Beverage outlet holder" can be ordered and exchanged as a spare part under part number 072390. Plan about 30 - 40 minutes for the replacement.

**NOTE**

 All screws to be loosened for replacement must afterwards be secured with Loctite 248.



## Replacement of "Beverage outlet holder" 072390

## Disassembly of beverage outlet holder

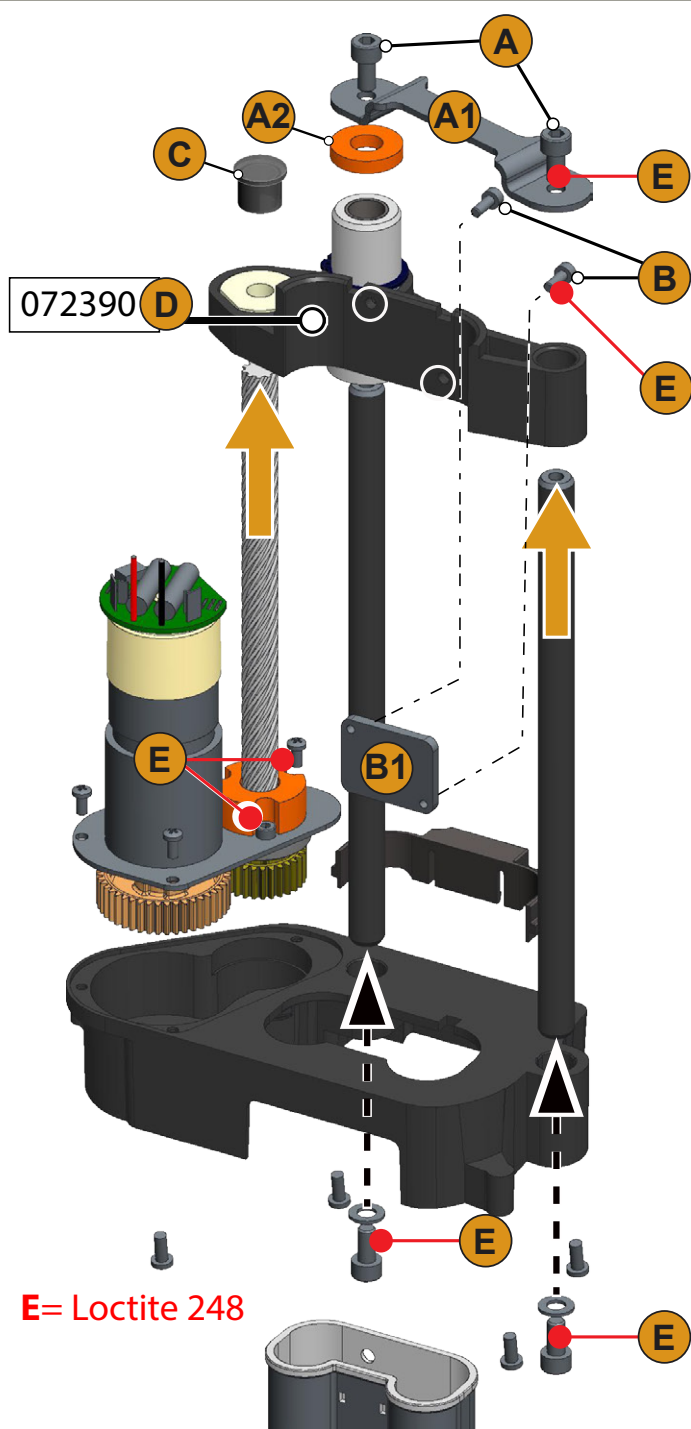


Fig. Drive of automatic height-adjustable beverage outlet

See additional figures for step sequences, page 3.

► Disassemble user panel.

☑ The drive unit to the AHA is accessible.

► Loosen **1** the 2 cyl. I hex. screws size 4 and remove **A** yoke plate **A1**.

► Remove **2** damper **A2** upwards off the stop.

► Place **3** coffee hose to the left and the milk hose to the right over the guides.

**i** For the following steps, take into account the access point from below through the opening of the grounds container shaft.

After loosening the 1st screw (bottom right), the plate can be turned somewhat askew in order to better secure it from falling.

► Loosen **4** the 2 cyl. I hex. screws size 2.5 **B** and remove plate **B1**.

► Remove **5** protective cap **C** from the spindle.

► Release **6** beverage outlet from the guides and lift out the "Beverage outlet holder" **D**.

**i** It may be necessary to slightly twist the spindle to place the "Beverage outlet holder".

► Place **7** the new "Beverage outlet holder" **D** onto the guides and spindle and insert.

► Place the **8** protective cap **C** of the spindle back on.

► Apply Loctite to the screws **B** before mounting.

► Reinsert **9** beverage outlet and temporarily fasten with tape. Remount plate **B1** with 2 cyl. I hex. screws size 2.5 **B**.

► Remove tape.

► Place the **10** damper **A2** from the stop back on.

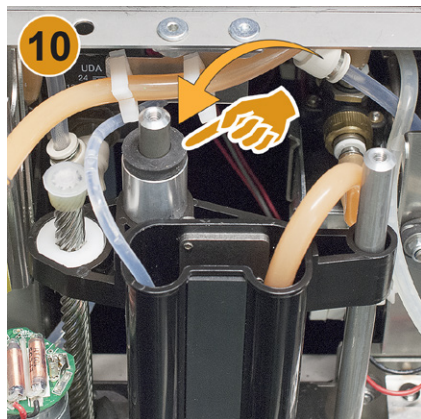
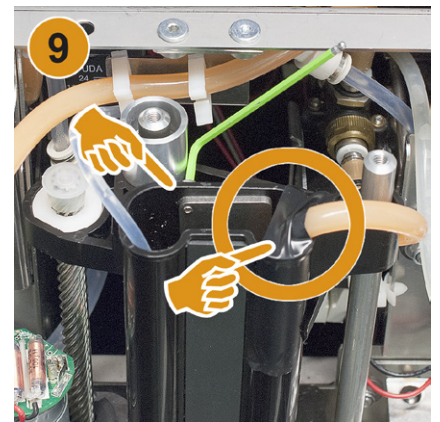
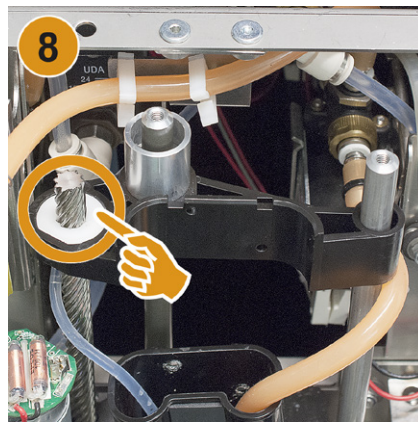
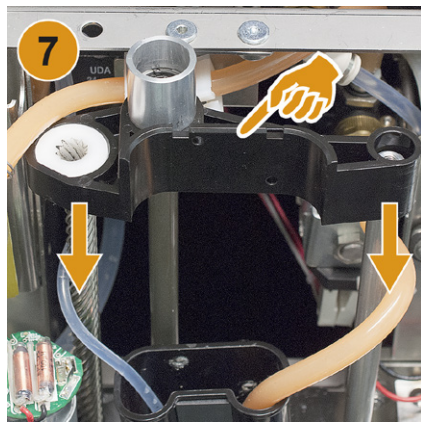
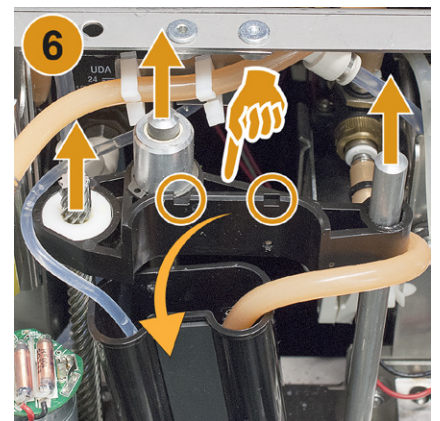
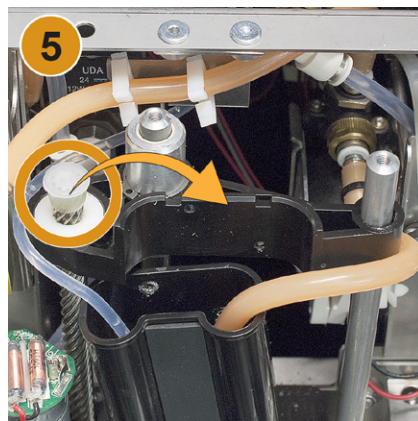
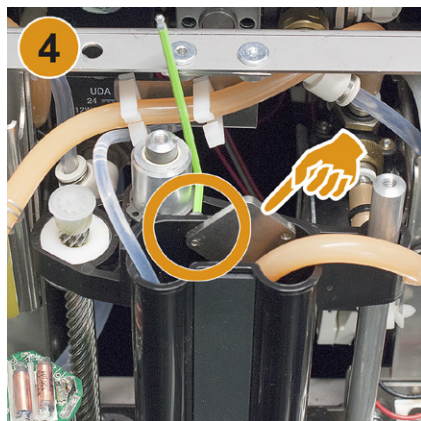
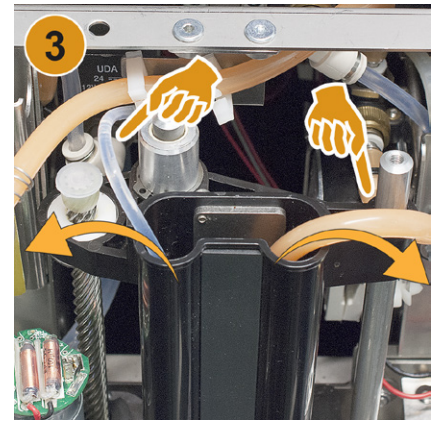
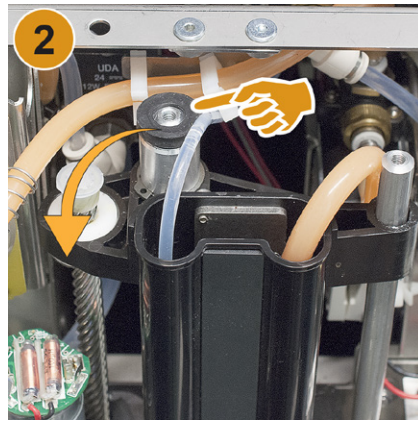
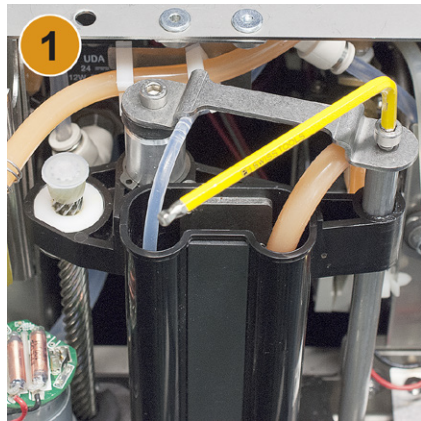
► Apply Loctite to the 2 screws **A** before mounting.

► Correctly replace **11** coffee hose and milk hose between the guides. Retighten yoke plate with the 2 cyl. I hex. screws size 4 **A**.

► Apply Loctite to the **E** screws.

► Reinstall the user panel.

Disassembly - Assembly sequence 1 to 11



(EN) This page is intentionally left blank.

(DE) Diese Seite wurde absichtlich frei gelassen.

(FR) Cette page est laissée vide intentionnellement.

(ES) Esta página se dejado en blanco intencionalmente.