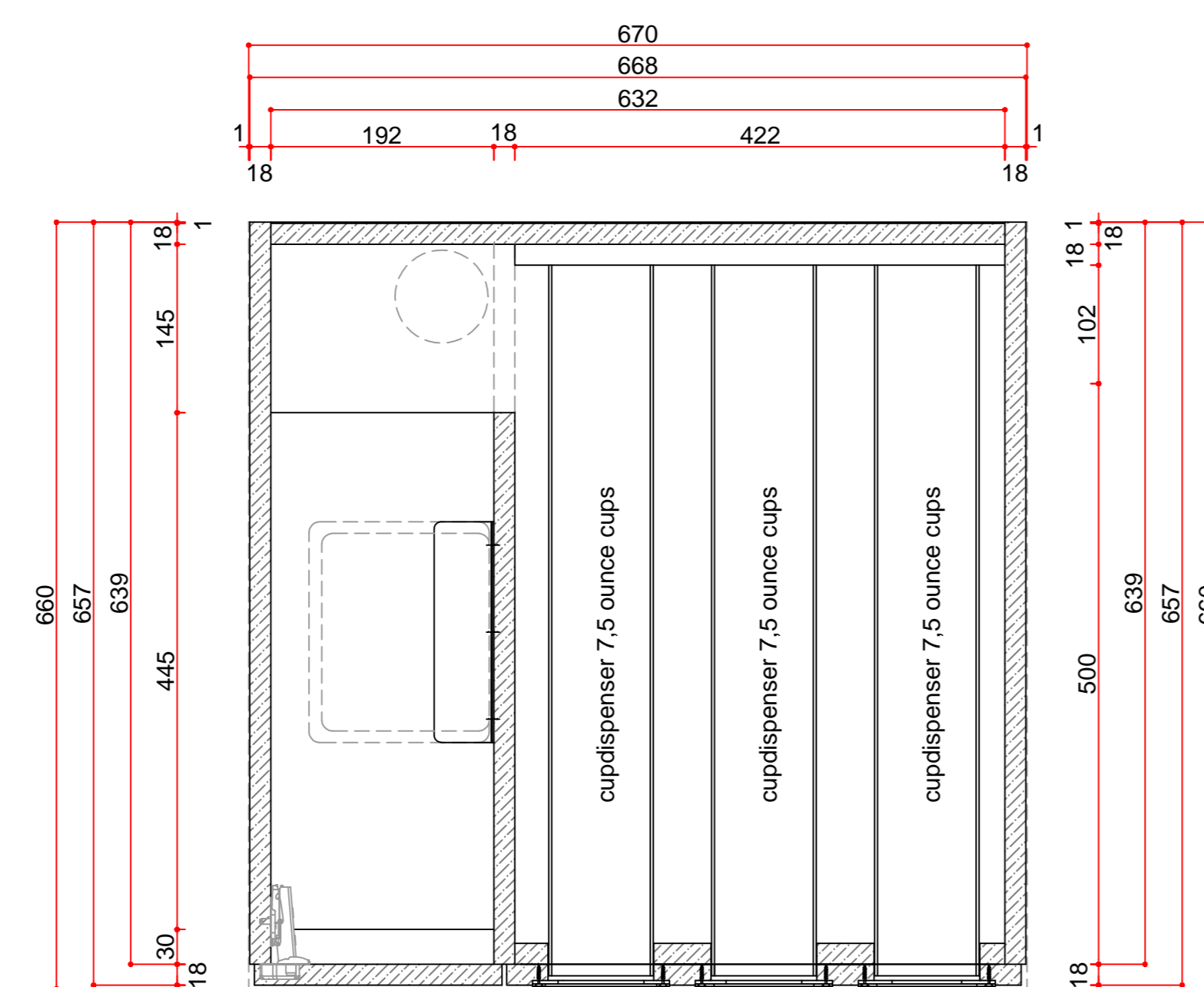
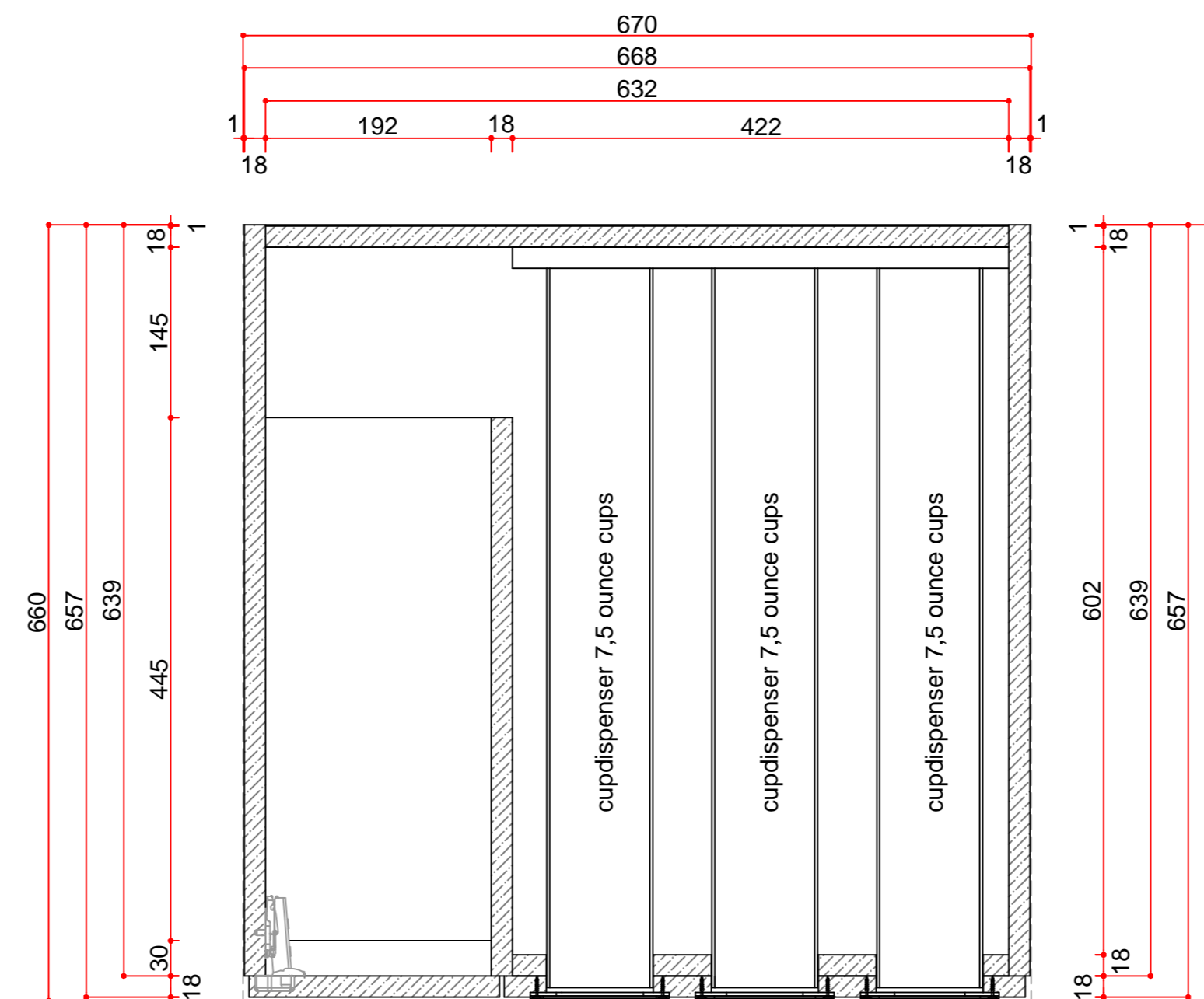


Top view



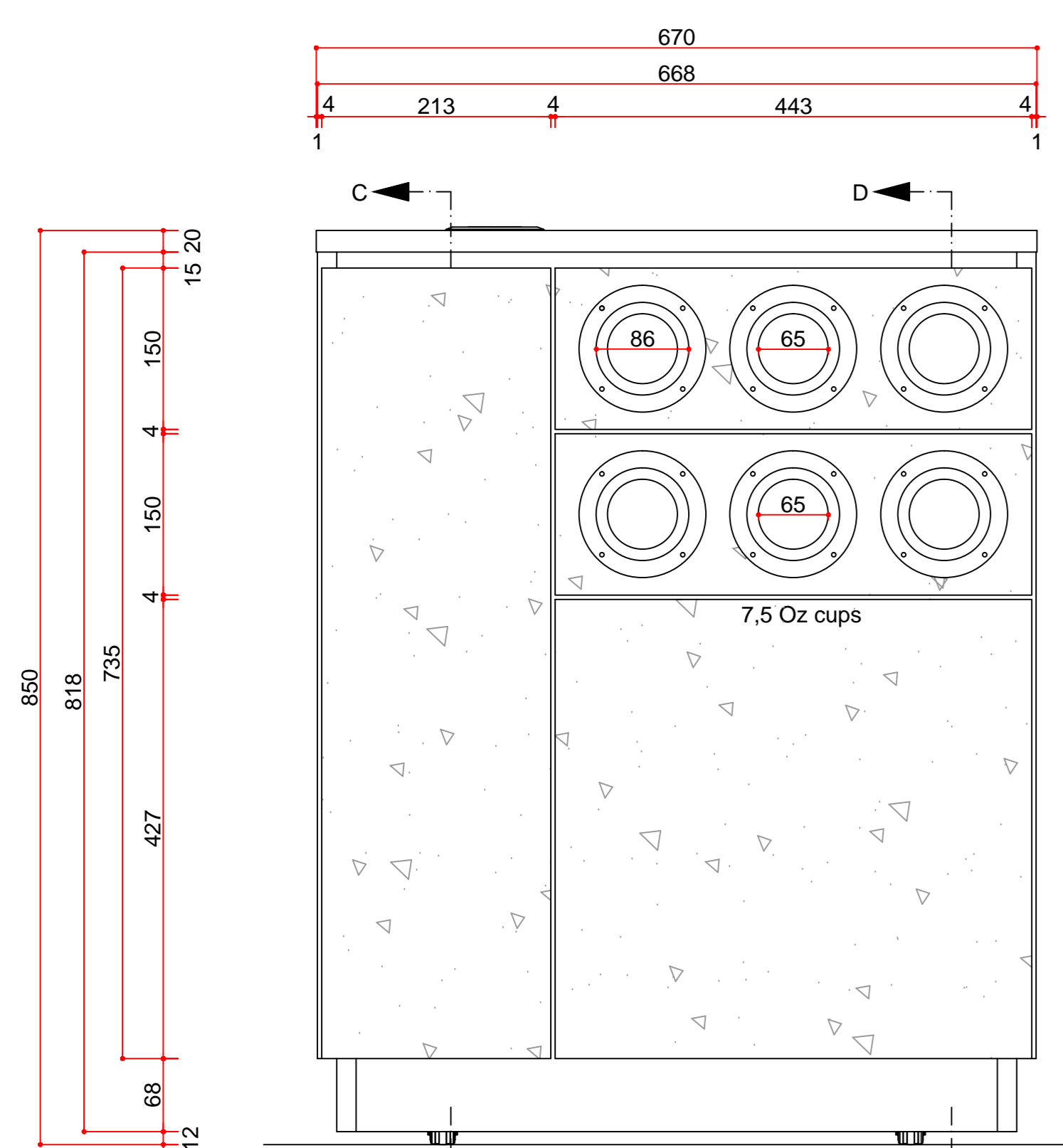
Horizontal section A-A



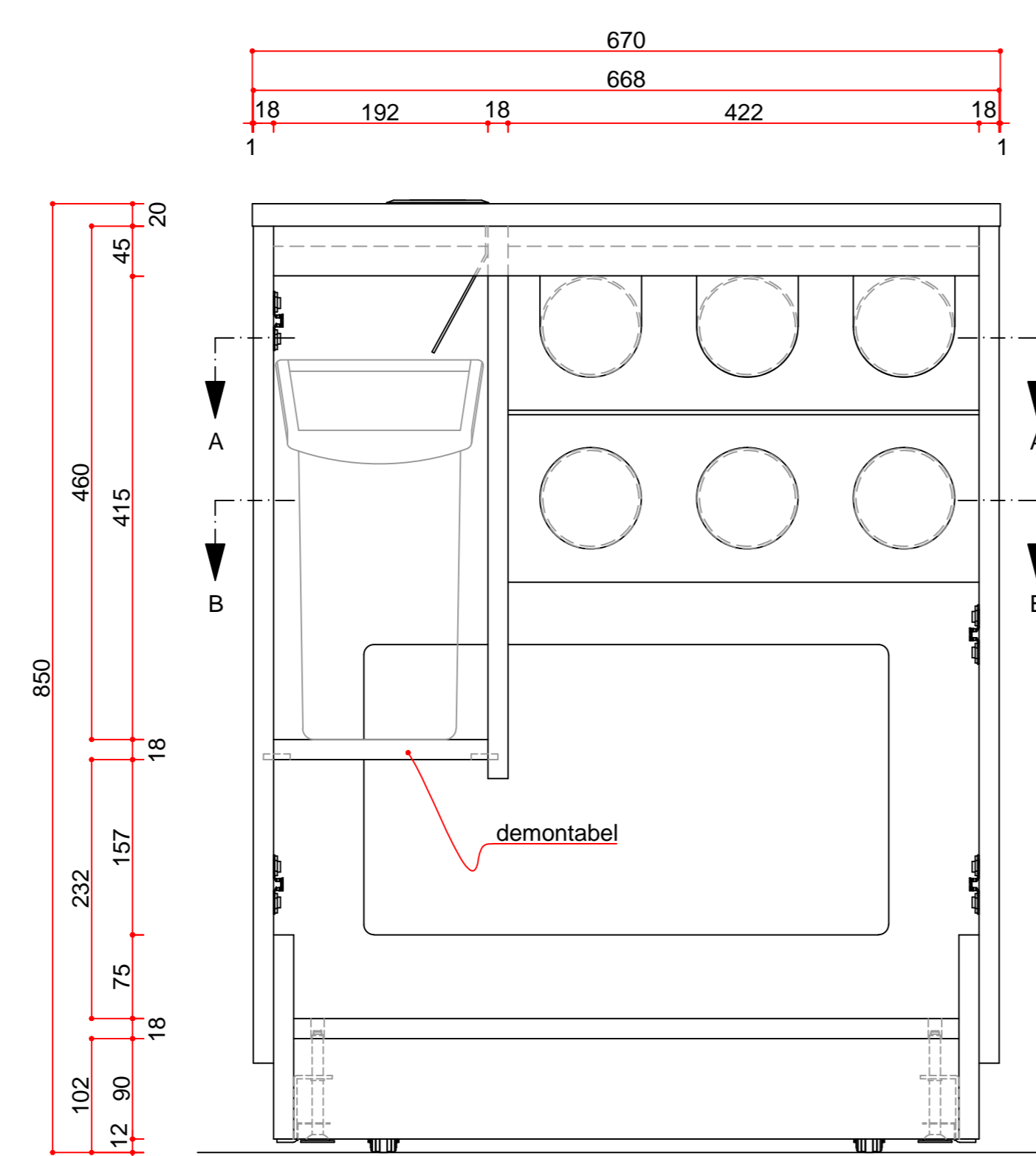
Horizontal section B-B



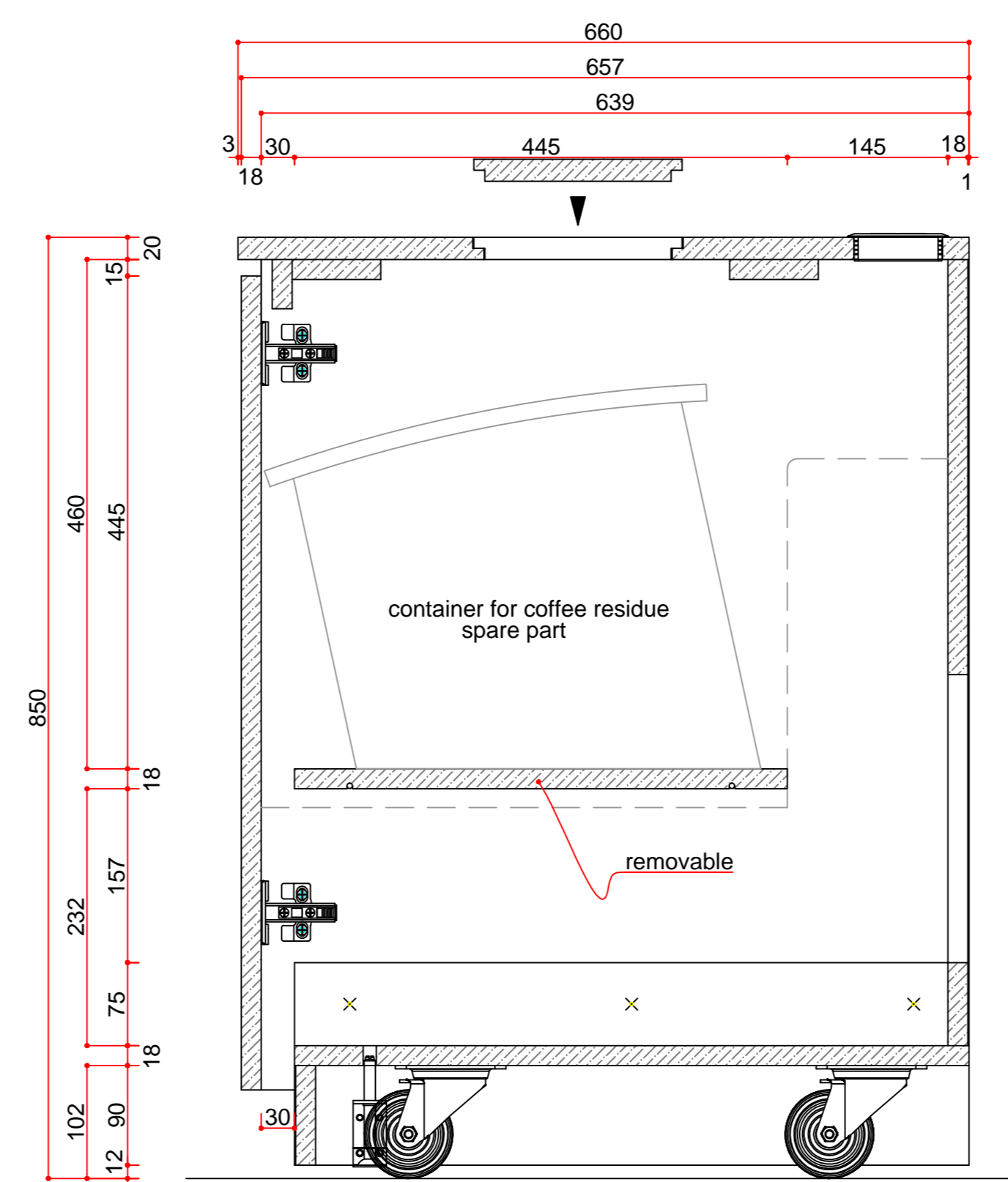
Cabinet_Strd_67_Con_6Disp



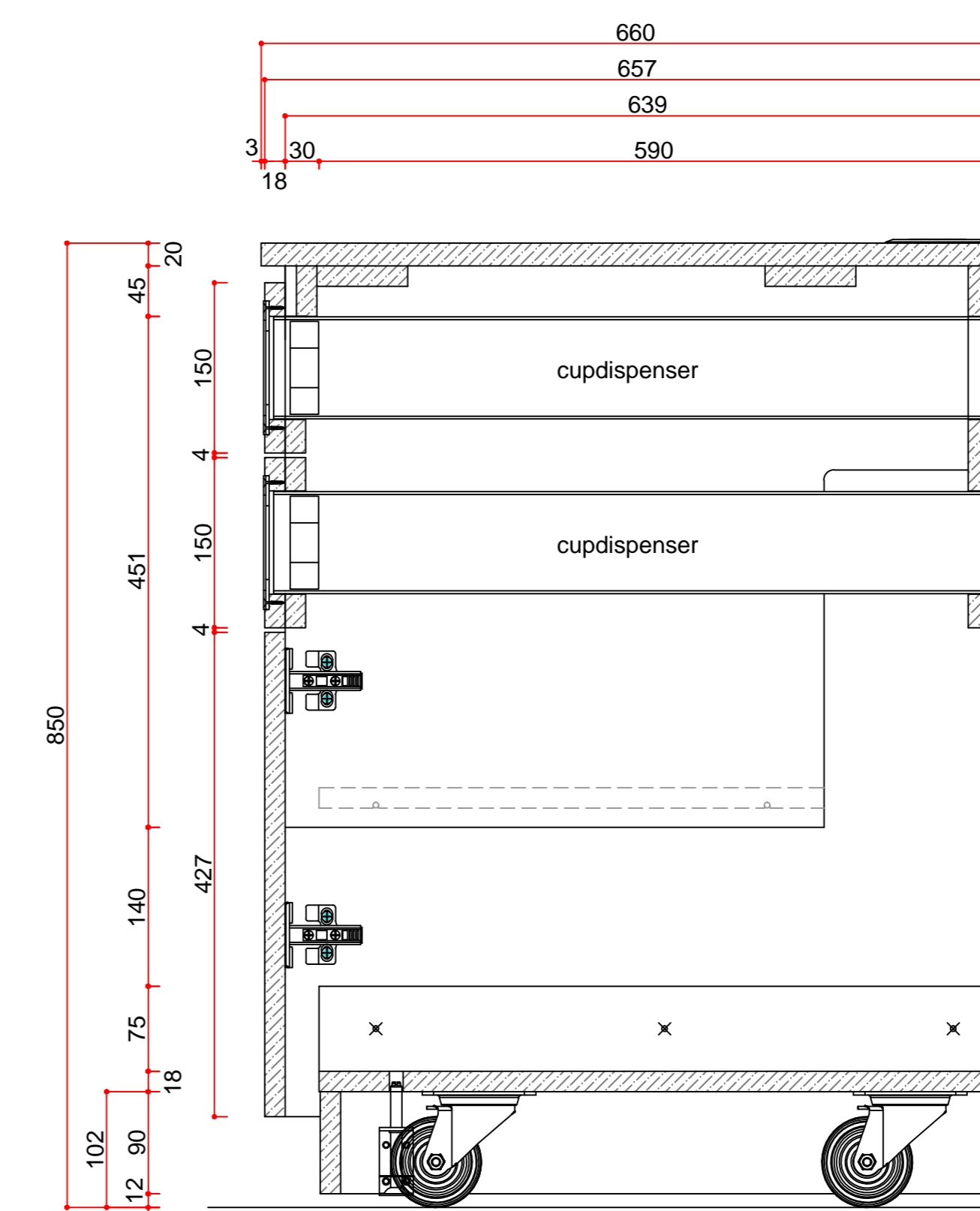
Front view



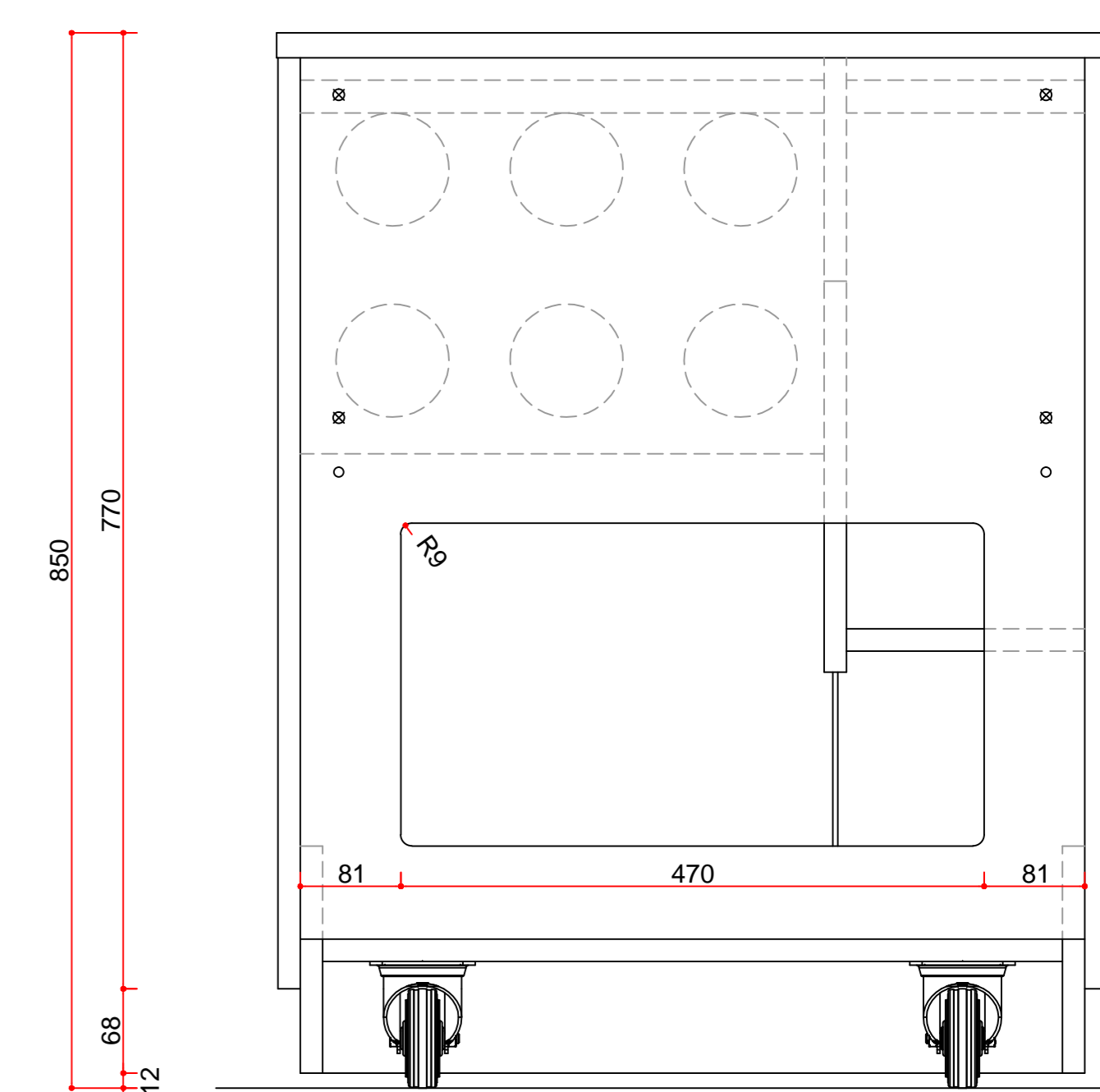
Front view without fronts



Vertical section C-C



Vertical section D-D



Back view

Materials	
Basic cabinet	Melamine chipwood Thermopal U12000 MP black, water resistant
Edges cabinet	ABS 1 mm, Thermopal U12000 MP black
Plinth cabinet	Melamine chipwood Thermopal U12000 MP black, water resistant
Fronts	Melamine chipwood Unilin F976 Granulo Concrete
Edges fronts	ABS 1 mm, Unilin F976 Granulo Concrete
Rings cupdispensers	Black plastic
Handgrip profile	Melamine chipwood Thermopal U12000 MP black, water resistant
Worktop	Black MDF water resistant, HPL Thermopal U12000 SD black
Edges worktop	ABS 1 mm, Thermopal U12000 MP black
Wheels	Castor wheels Blicke LPA-TPA 75G

Color Article Number:

Concrete 20206701

FINAL PRODUCTION DRAWING

Oprichtgever: Jacobs Douwe Egberts	Schaal:
Project: Standard cabinet 670 mm 6disp	1:5
Betref: Standard cabinet 670 mm 6disp	Order:
Dat: 12-01-2021	Wijziging:
Formaat: A0	a 19-01-2021
Maat in mm	b
Get: J.D.	c
Paraaf:	