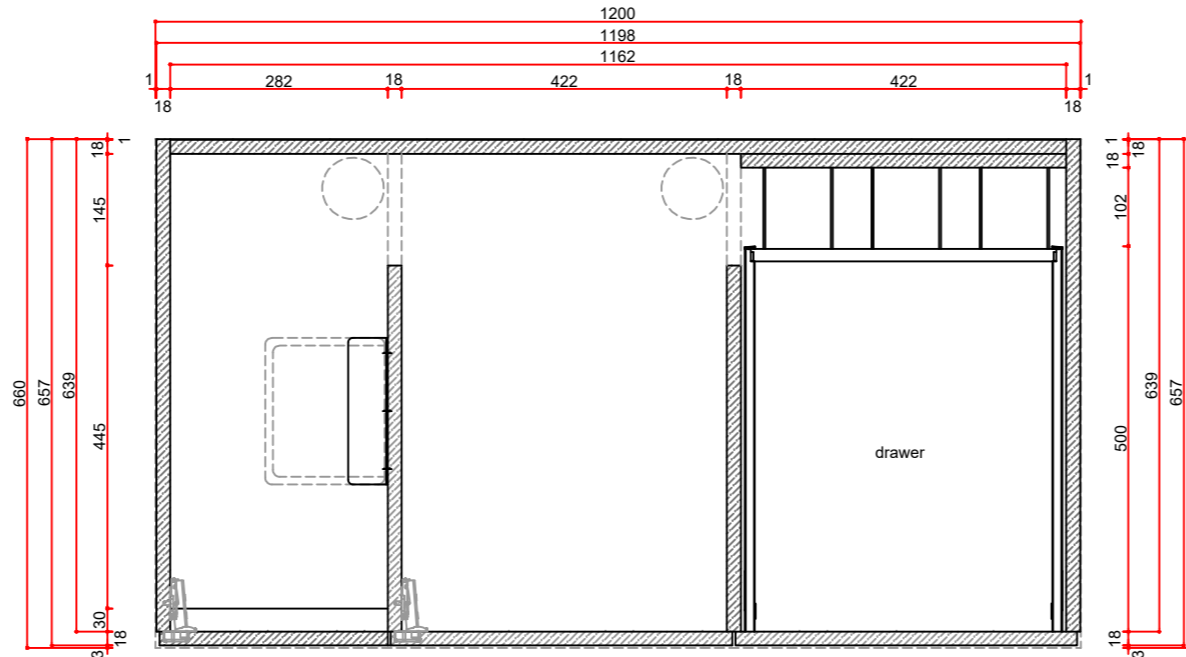
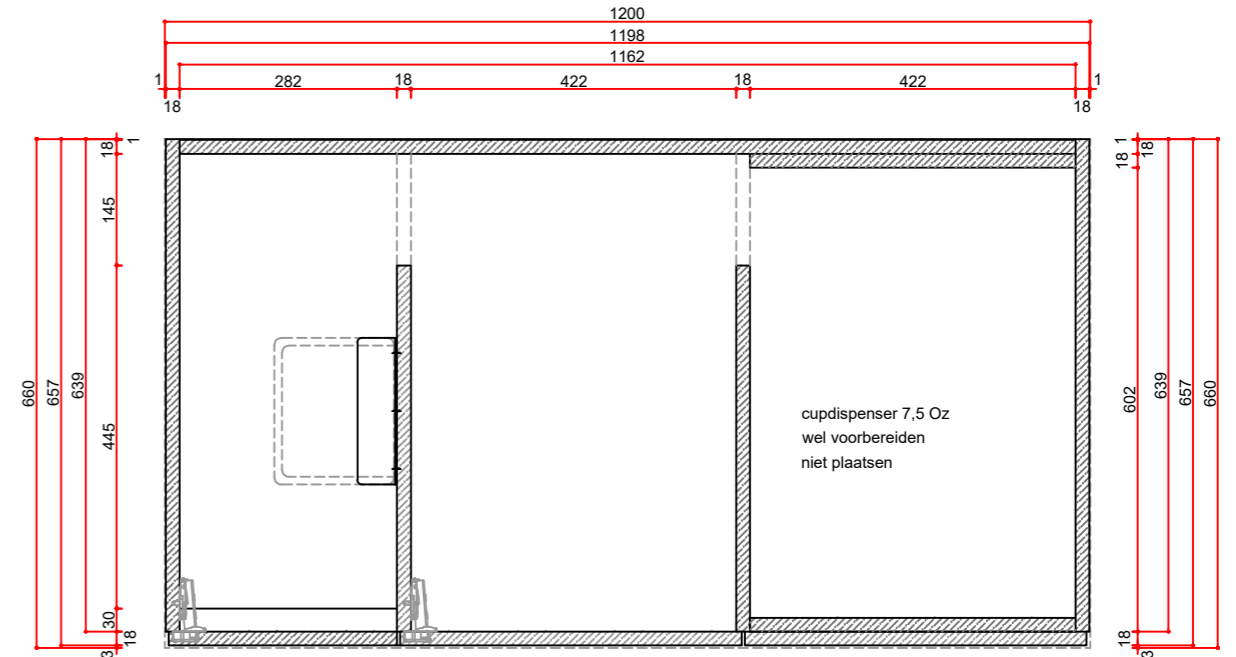


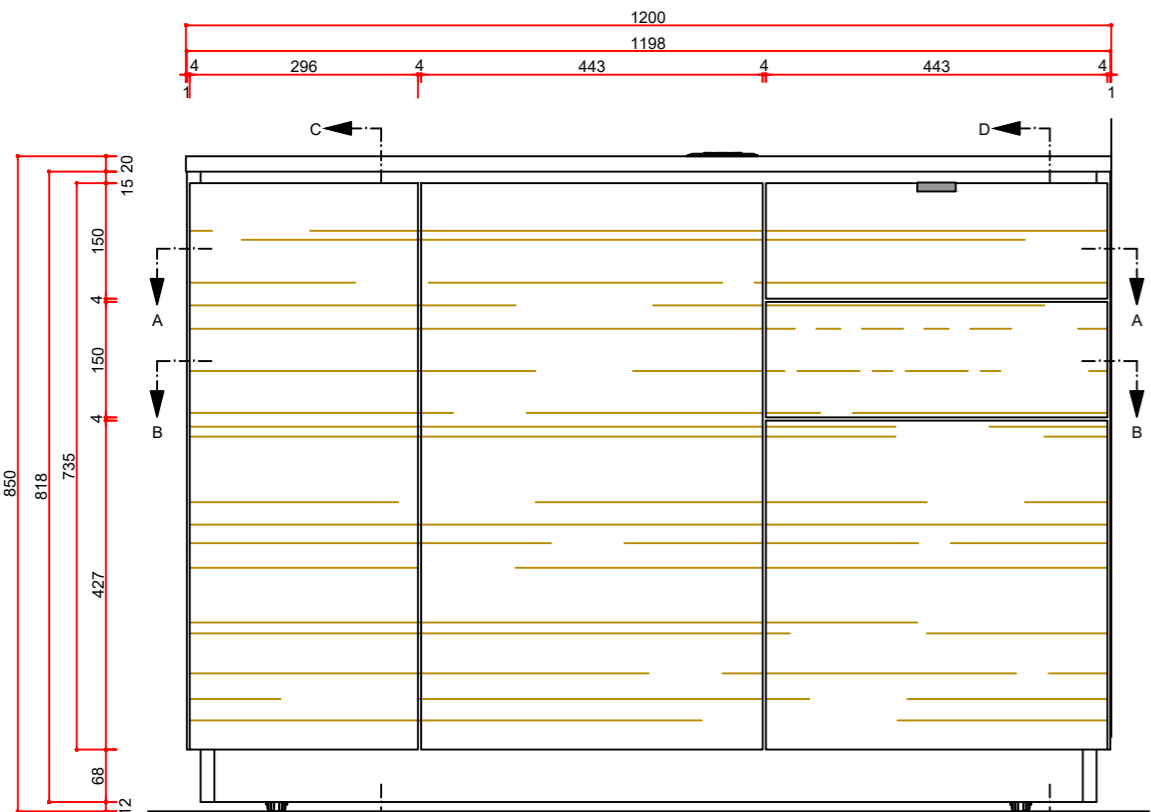
Top view



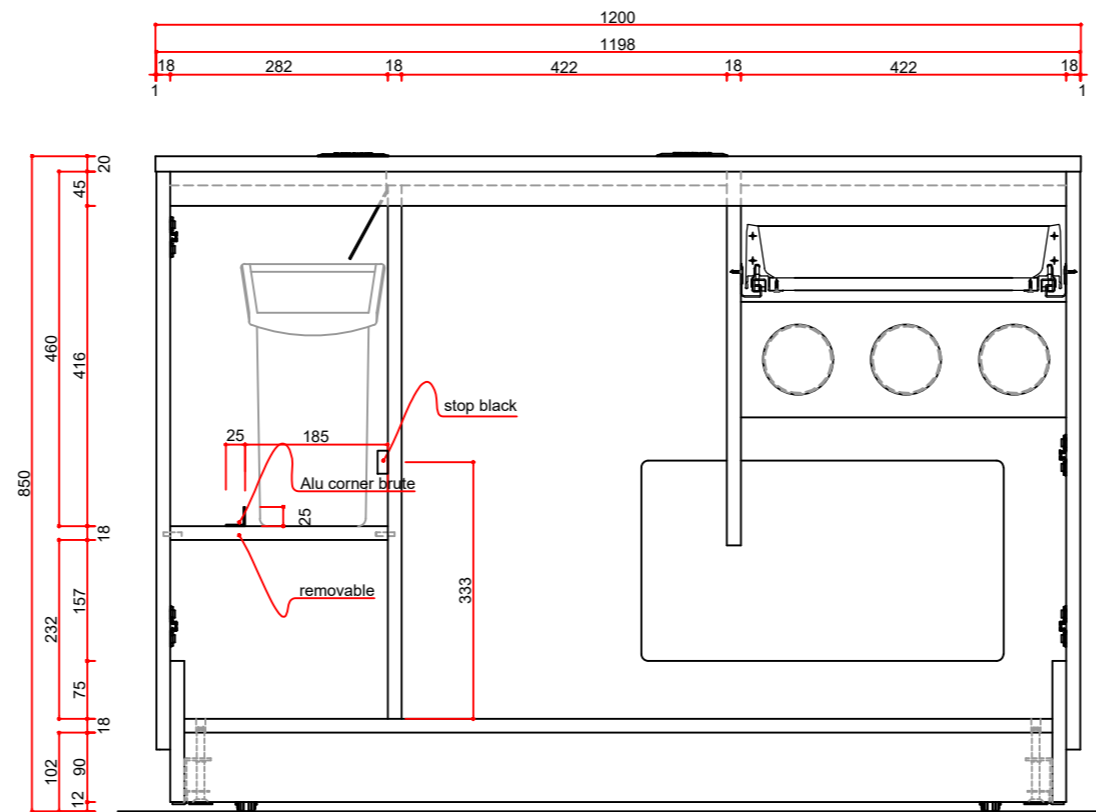
Horizontal section A-A



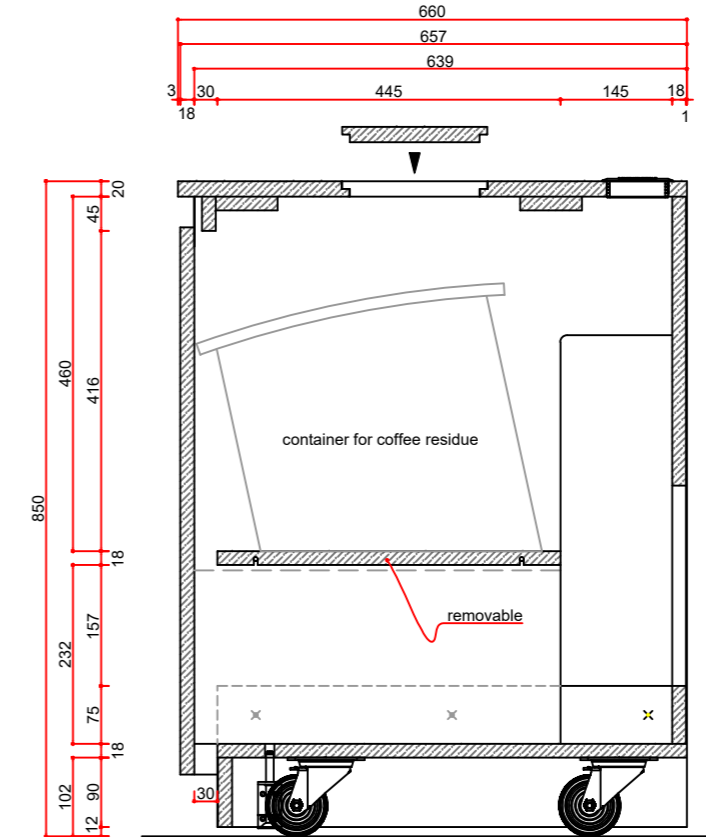
Horizontal section B-B



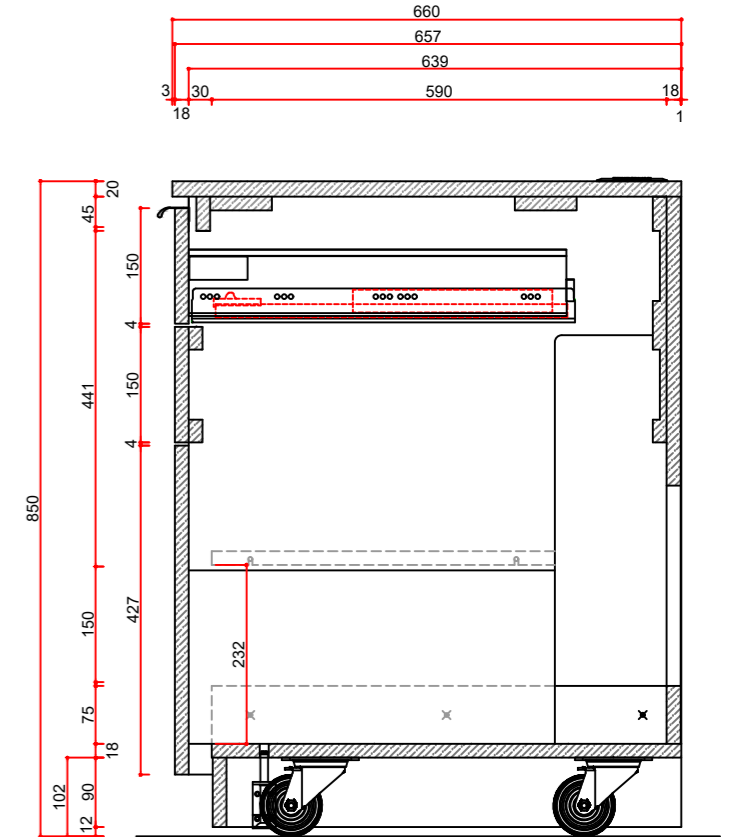
Front view



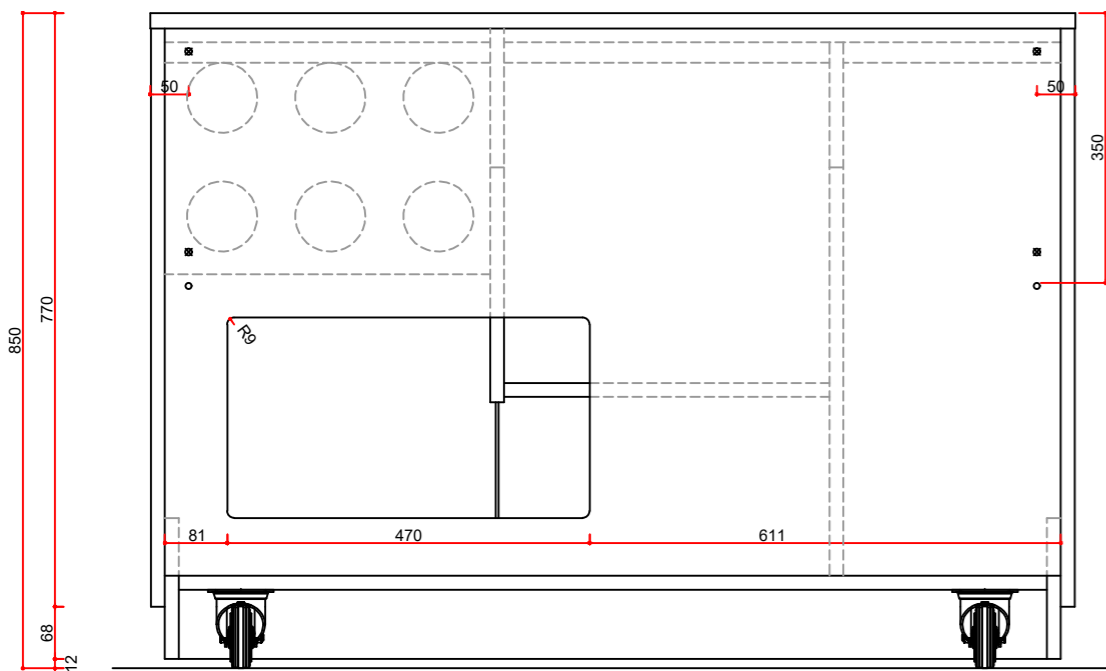
Front view without fronts



Vertical section C-C



Vertical section D-D



Back view

| Materials | |
|---------------------------|--|
| Basic cabinet | Melamine chipwood Thermopal U12000 MP black, water resistant |
| Edges cabinet | ABS 1 mm, Thermopal U12000 MP black |
| Plinth cabinet | Melamine chipwood Thermopal U12000 MP black, water resistant |
| Fronts | Melamine chipwood Egger H1344 ST32 Sherman oak cognacbrown |
| Edges fronts | ABS 1 mm, Egger H1344 ST32 Sherman oak cognacbrown |
| Handgrip profile | Melamine chipwood Thermopal U12000 MP black, water resistant |
| Worktop | Black MDF water resistant, HPL Thermopal U12000 SD black |
| Edges worktop | ABS 1 mm, Thermopal U12000 MP black |
| Wheels | Castor wheels Blicke LPA-TPA 75G |
| Container Coffee residue | Manutan Mondo 18 l, color blue |
| Coffee residue conduction | Steel, Ral 9005 black |

Color Article Number:

Wood

FINAL PRODUCTION DRAWING

| | |
|---|------------|
| Opdrachtgever: Jacobs Douwe Egberts | Schaal: |
| Project: Standard cabinet 1200 mm ldrwr | 1:5 |
| Betreft: standard cabinet 1200 mm ldrwr | Order: |
| Dat: 11-07-2024 | Wijziging: |
| Formaat: A0 | 3 |
| Maat in mm | 19-07-2024 |
| Get. J.D. | Paraaf: |