

Type <b>Coffee Vending Machine</b>	Model <b>9100</b>	N° T.I. <b>02 - 2020</b>
Serial Number <b>94511620</b>	Subject <b>NON-RETURN VALVE INTEGRATED with BY-PASS</b>	ISSUED FOR (X) Action Information <input checked="" type="checkbox"/>

**REASON:**

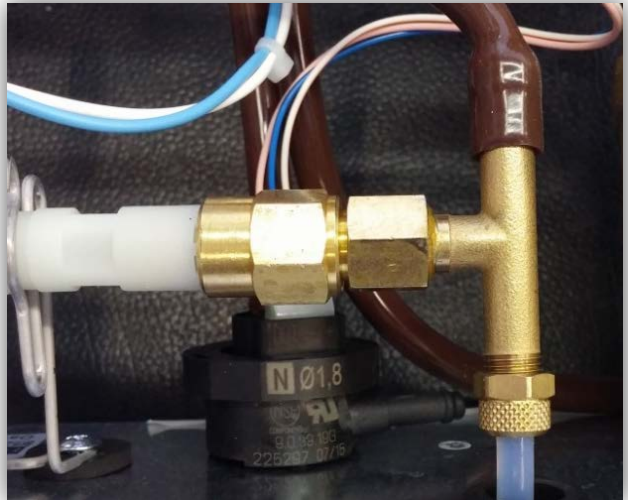
Be informed that with the aim to improve and standardize our equipment

**MODIFICATIONS:**

A **new non-return valve**, integrated with a **by-pass**, has been introduced. The new valve is made of polyamide.

**New solution**  
**Non-Return Valve + BY-PASS integrated**

**Pre-modification solution**  
**Non-Return Valve + BY-PASS separated**



New **"non-Return Valve + BY-PASS"** integrated  
Spare code: **257729**

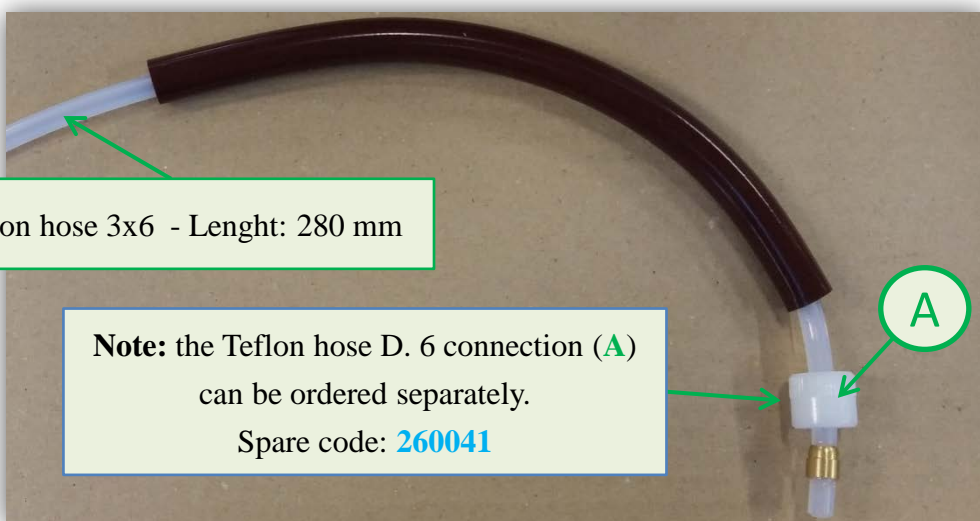
➤ **Machines concerned by modification from S/N 94511620**

Type <b>Coffee Vending Machine</b>	Model <b>9100</b>	N° T.I. <b>02 - 2020</b>
Serial Number <b>94511620</b>	Subject <b>NON-RETURN VALVE INTEGRATED with BY-PASS</b>	ISSUED FOR (X) Action Information <input checked="" type="checkbox"/>

**Important note:** for machines prior to above S/N, it's possible to implement the **"Non-Return Valve + BY-PASS integrated"** by ordering the **hose assembly (1)** and the **OR gasket (2)**.

1

New hose assembly for non-return valve - Spare code: **262051**



Teflon hose 3x6 - Length: 280 mm

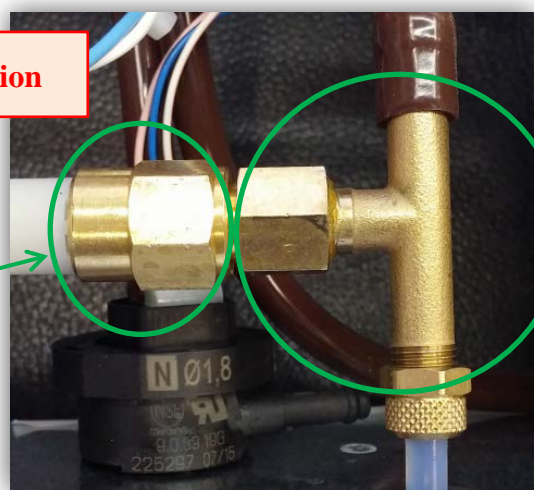
**Note:** the Teflon hose D. 6 connection (A) can be ordered separately.  
Spare code: **260041**

2 : Gasket OR 1,5 x 5,5  
Spare code: **260042**



➤ ➔ **Pre-modification solution**

**Non-return valve**  
Spare code: **099101**



**By-Pass pump 12 bar**  
Spare code: **098764**